



THE CAUSEWAY COAST & GLENS

NORTHERN IRELAND

Causeway Coastal Route

the essential Irish journey

Pocket Guide **2006**

CONTENTS

- 3 A Landscape of Rugged Beauty
- 4 The Essential Irish Journey
- 22 Craic and Culture
- 30 Shopping and Galleries
- 34 Great Food and Drink
- 38 Family Fun
- 44 Enjoy the Outdoors
- 50 Around and About
- 56 Forest Parks
- 60 The Nine Green Glens of Antrim
- 64 Events 2006
- 68 Golf
- 72 Accommodation
- 111 Regional Tourist Information Centres

a landscape of rugged beauty

As an area of unsurpassed natural beauty, the Causeway Coast and Glens offers a unique fusion of breathtaking scenery and bustling towns; of fascinating heritage and inspiring myth. A timeless landscape where rugged coastline surrounds silent, romantic glens and lush forests, where Saint Patrick once tended his herds on the slopes of Slemish Mountain, where beautiful beaches beckon and where pure rivers wander through unspoilt lowlands and picturesque villages. The world famous Giant's Causeway with its array of hexagonal basalt columns and tales of ancient Irish giants, and 'Old Bushmills', the world's oldest licensed whiskey distillery, are a must for every itinerary.

The Causeway Coastal Route takes you from the outskirts of Belfast

on one of Europe's most scenic journeys taking in picturesque fishing villages, rugged cliffs, three designated areas of outstanding natural beauty and the UNESCO world heritage site at the Giants Causeway. There are also a number of small circular tours which take in places including Slemish Mountain, the Lower Bann Valley, Islandmagee and the magnificent Glens of Antrim.

Experience the beautiful landscape whilst engaging in one of the many activities on offer. Miles of fabulous fairways, including the prestigious Royal Portrush, await the golfer at over 30 courses. Whatever your choice; fishing, sailing, diving, horse riding, cycling or walking, it's all here. This is a region packed with something for everyone, filled with history, myth, beauty and song, and a welcome second to none.



Northern Ireland
Tourist Board



This project has been part-funded by the
European Regional Development Fund
through the Peace II Programme

the essential **Irish journey**

Within a day you can take a trail through breathtaking physical landscapes and an odyssey through tales of giants and ghosts, fairies and faith, longing and love.



Dunluce Castle

To travel along the coast road is to experience one of the most dramatic routes in the world. Some eighty miles of salty coastline will transport you past rugged and windswept cliffs, spectacular scenery and fabulous unspoilt beaches. It's a coastline sprinkled with historic castles, churches and forts. Many are now just ruins but each holds the memories of a mysterious and heroic past. A past populated by seafaring Vikings and swashbuckling tales of the ancient Irish clans.

It's a journey not to be hurried. Every twist and turn in the road will reveal new sights, well placed stopping points, offering uninterrupted views to Scotland on one side and tall limestone cliffs dissected by beautiful glens on the other.

As you journey northwards the magnificent nine Glens of Antrim will slowly unfold - a corner of Northern Ireland where fairies and folklore are part of daily life, where to cut down a fairy thorn will bring a devastating revenge. Famed in legend and song, each glen has its own distinct character and charm but all remain unspoilt and unexploited.

Wild in their beauty, each glen deserves a visit, but above all else don't miss Glenariff, the 'queen' of the glens with its gushing waterfalls and scenic path skirting the sheer sides of the plunging gorge.

On goes the road over bridges and under arches, past bays and beaches and strange rock formations. Travel inland and experience hills and valleys, dramatic scenery and historic sites steeped in myths and legends.

The Causeway Coast and Glens provide a journey of exploration, where imagination meets reality and where every village and town, castle and rocky shore are waiting to be discovered.



Wild Garlic, Glenarm

The Giant's Causeway

(2 miles east of Bushmills)

Ireland's top tourist attraction and UNESCO World Heritage site, the world famous Giant's Causeway displays formations of unusual six sided basalt columns and a wealth of local and natural history. Coast and cliff paths for exploration. The wreck site of the Armada treasure ship 'Girona' is found at Port-na-Spaniagh. Open for walking all year round. A minibus service is provided at a small charge to take visitors to the Causeway Stones.

Visitors centre with interpretive displays, AV theatre and tourist information. National Trust shop and tea room. Specialist guided tours operate June to August (booking necessary, phone for prices). Tours also available out of season (booking essential).

Disabled access. Admission charge to car park and audio visual.

T 028 2073 1855 (Visitors Centre)

T 028 2073 1582 (National Trust)

E giantscauseway@nationaltrust.org.uk



The Giant's Causeway



Whitepark Bay

Rathlin Island

(6 miles north of Ballycastle)

The island's rugged cliffs are home to the biggest seabird colony in Northern Ireland. A wealth of rare flora to discover. Stopping place for Robert the Bruce and his famed spider. Rathlin offers a range of accommodation, bar, café, guided tours and information centre. Access by ferry with Caledonian MacBrayne.

Ferry Information

T 028 2076 9299

General Information

T 028 2076 2024

Dooley's Cairn

(Garryduff Road, Dunloy)

A Neolithic Courtcairn dating from around 2000-4000BC and named after the Dooley family who gave it into State care.

Open all year, admission free.

T 028 2766 0230

F 028 2766 0222

E info@ballymoney.gov.uk

www.ballymoney.gov.uk

This is only one fine example of the numerous historical Cairns and monuments dotted throughout the region. For more detailed information, contact any of the Tourist Information Centres listed on page 111.



Rathlin Island

Carrick-A-Rede Rope Bridge



Mountsandel Fort

(Coleraine)

21.2 hectares of mature conservation mixed woodland overlooking the River Bann, Mountsandel Wood contains the oldest known human settlement in Ireland. It dates back to the Iron Age and is beside the site of the first hunter-gatherer settlement in Ireland, dating from before 7000BC. There are panoramic views of the Bann which reflect the earlier importance of this area. The forest walk goes from a high point at the Fort down to the banks of the Bann and passes close to the weir at the Cutts.

Open dawn to dusk daily.
For further information contact the Forest Office.
T 028 2955 6000
F 028 2955 7162
www.forestserviceni.gov.uk

Carrick-A-Rede Rope Bridge

(Half a mile from Ballintoy)

Enjoy the challenge of crossing the precarious Carrick-A-Rede rope bridge which crosses a 24m deep and 18m wide chasm which gives access to a salmon fishery. Stunning views over the sea to the Scottish coast. Coastal walks along the limestone headland. Tea room and information point.

Free car park. Per person charge to cross rope bridge. Phone for details.
Open 4 March-28 May
10.00am-6.00pm daily.
Open 29 May-3 September
10.00am-7.00pm daily.
Open 4 September-31 October
10.00am-6.00pm daily.
Bridge open weather permitting.
T 028 2073 1582
T 028 2076 9839
E carrickarede@nationaltrust.org.uk
www.ntni.org.uk

Mussenden Temple



Mussenden Temple and Downhill Estate

(1 mile west of Castlerock)

Perilously close to the edge of a sheer drop stands this beautiful 18th Century folly, originally inspired by the Tivoli Temple of Vesta. It is a much photographed landmark built close to the extensive gardens, grounds and forest of the ruined Downhill Castle.

Admission charge and parking at Lions Gate car park.

Open 1 May-30 June

11.00am-5.00pm weekends and Bank Holidays/Public Holidays.

Open 1 July-31 Aug

11.00am-5.00pm daily.

Open 2-30 September

11.00am-5.00pm weekends.

T 028 2073 1582

www.ntni.org.uk

Carrickfergus Castle

(Marine Highway, Carrickfergus)
Dominating the town's skyline is Ireland's best preserved Norman Castle. Established in 1178 by John de Courcy, the castle has seen action right up until the Second World War. It is now a popular visitor attraction that everyone can enjoy. Open throughout the year.

Admission charge. Guided tours available, gift shop, refreshment area and amenities provided.

Open January-March
10.00am-4.00pm Mon-Sat
2.00pm-4.00pm Sunday

Open April-December
10.00am-6.00pm Mon-Sat
2.00pm-6.00pm Sunday

T 028 9335 1273

www.ehsni.gov.uk

Dunluce Castle

(3 miles east of Portrush)
Clinging fast onto a dramatic cliff-top, Dunluce is thought to be the most romantic and picturesque Castle in Ireland dating back to the 14th Century.

Admission charge. Guided tours.

Open April-September

10.00am-5.30pm

October-March

10.00am-4.30pm

T 028 2073 1938

F 028 2073 2850

E dunluce.castle@doeni.gov.uk



Carrickfergus Castle



Dunluce Castle

Hezlett House

(107 Sea Road, Castlerock)
300 year old thatched cottage with timber frames dating from 1690, making it one of the oldest buildings in N Ireland. Cruck-truss roof is viewable in the attic with tiny rooms evoking the mood of the 19th Century.

Admission charge.

Open April, May and September
Sat, Sun and Bank/Public Holidays.

1.00pm-6.00pm.

Open Easter and 4-26 June

1.00pm-5.00pm weekends.

Open 1 July-31 August

1.00pm-5.00pm daily
(except Tues).

T 028 7084 8728

F 028 7084 8728

E hezletthouse@
nationaltrust.org.uk

Andrew Jackson Cottage and US Rangers Centre

(Boneybefore, Carrickfergus)
This traditional 18th Century Ulster Scots farmhouse displays the ancestry and life of the 7th President of the United States as well as rural life. Beside the Jackson Centre is an exhibition dedicated to the US Rangers, an elite American Army regiment. The exhibition has an enthralling collection of uniforms, photographs, documents and other material detailing this famed combat unit.

For guided tours and groups,
booking is essential. For opening
times please contact.

T 028 9335 8049

F 028 9335 0350

E touristinfo@carrickfergus.org
www.carrickfergus.org



Hezlett House, Castlerock



US Rangers Centre

Arthur Cottage, Cullybackey



Arthur Cottage

(Dreen, Cullybackey)

Arthur Cottage, Cullybackey, is the Ancestral Home of the 21st President of the USA, Chester Alan Arthur. The thatched cottage and interpretive centre detail the story of President Arthur and his road to the Presidency. Traditional baking demonstrations of soda bread and pancakes baked over an open turf fire by ladies dressed in period costume in June, July and August.

Guided tours, limited disabled access, small admission charge, group reductions.

Phone for opening times.

T 028 2588 0781 (seasonal)

T 028 2563 8494 (all year)

E [tourist.information@](mailto:tourist.information@ballymena.gov.uk)

ballymena.gov.uk

www.ballymena.gov.uk

Ballycastle Museum

Folk/social history of the Glens in the town's 18th Century courthouse. Exhibits include the Glentaisie Banner of the first Feis na nGleann (1904).

Admission free.

Open July-August Mon-Sat
12.00pm-6.00pm or by
arrangement.

T 028 2076 2024

www.moyle-council.org



Celtic Cross, Glenarm

Ballymoney Museum

(Townhead Street, Ballymoney)

The museum traces the history of the area and the character of the people. A variety of artefacts are on display and exhibitions change throughout the year. The museum also features themes such as motorcycle road racing.

Admission free.

Phone for opening times.

T 028 2766 0245

F 028 2766 0222

E keith.beattie@ballymoney.gov.uk

www.ballymoney.gov.uk



Port Stewart Harbour

Ballymena Museum

(3 Wellington Court, Ballymena)
Ballymena Museum is located in the centre of the busy retail town and aims to collect, preserve and interpret the rich local history and heritage of the Borough.

Admission free.

Open May–September
Mon–Fri 10.00am–5.00pm

Sat 10.00am–1.00pm.

Open Oct–April

Mon–Fri 10.00am–1.00pm
and 2.00pm–5.00pm

Sat 10.00am–1.00pm.

T 028 2564 2166

F 028 2563 8582

E [ballymena.museum@
ballymena.gov.uk](mailto:ballymena.museum@ballymena.gov.uk)

www.ballymena.gov.uk

Garvagh Museum and Heritage Centre

(Garvagh)

Situated in the walled garden of the former Garvagh Estate, the museum houses collections which cover most aspects of rural and domestic life in the 19th and early 20th Centuries. Also blacksmiths shop and displays of horse-drawn agricultural machinery.

Admission charge.

Open mid April–mid Sept

Wed–Sat 2.00pm–5.00pm.

T 028 2955 8216

T 028 2955 8598

E info@garvaghmuseum.com

www.garvaghmuseum.com



Carnlough Harbour



The Dark Hedges, Ballymoney

Larne Museum – Carnegie Centre

(2 Victoria Road, Larne)

The newly opened Carnegie Centre houses Larne Museum, a temporary exhibition gallery, auditorium and education centre. The Museum charts Larne Borough's maritime, agricultural, industrial and social history through a range of exhibits and interactive features. The temporary gallery has a wide variety of exhibitions throughout the year including historic costume and art exhibitions.

Open October to Easter
Mon-Fri 12.30pm-5.00pm.
Easter to September
Mon-Sat 12.30pm-5.00pm.
T 028 2827 9482
E christabel.williamson@
lycos.co.uk
www.larne.gov.uk

Larne Interpretive Centre

(Narrow Gauge Road, Larne)

Based in the TIC, visitors can see in words and pictures the story of the building of the Antrim Coast Road. Video presentation, gift shop and disabled access.

Admission free.

Open all year

Mon-Fri 9.00am-5.00pm

(open Sat in summer months).

T 028 2826 0088

E larnetourism@btconnect.com

www.larne.gov.uk



Slemish Mountain

Old Bushmills Distillery



Flame, Gasworks Museum of Ireland

(44 Irish Quarter West,
Carrickfergus)

Ireland's sole surviving coal gasworks, dating from 1855, is a unique visitor attraction with also boasts an extensive collection of original gas appliances.

Guides available daily.

Group bookings welcome

by appointment.

T 028 9336 9575

E info@flamegasworks.fsnet.co.uk

www.gasworksflame.com

Old Bushmills Distillery Co. Ltd

(Main Street, Bushmills)

Learn the secrets of the special water from St Columb's Rill in the world's oldest licenced whiskey distillery. Pass by the shining copper stills and age old oak casks before sampling the finest Irish Malt Whiskey. Guided tours (unsuitable for disabled), café, shop, AV presentation.

Admission charge.

Open 7 days a week all year.

Phone for tour times and group bookings.

T 028 2073 1521

E valeriecoils@diageo.com

www.bushmills.com

Patterson's Spade Mill



Patterson's Spade Mill

(Antrim Road, Templepatrick)

The last surviving water-driven spade mill in Ireland. Original equipment has been carefully restored. Enjoy a guided tour and see a spade being made with the original hammers, turbine and press.

Admission charge.

Open 17 March

Open April-May

2.00pm-6.00pm

Weekends and Bank Holidays.

Open June-August

2.00pm-6.00pm daily ex Tues.

Open September

2.00pm-6.00pm weekends.

Open 1-8 October

2.00pm-6.00pm weekends.

T 028 9443 3619

F 028 9443 3619

www.ntni.org.uk

Benvarnden Gardens

(36 Benvarnden Road,
Dervock, Ballymoney)

The lovely gardens at Benvarnden are open 1 May to 30 August from 12.00pm - 5.30pm. Tours of the house for groups pre booked are shown around by the owners.

T 028 2074 1331

F 028 2074 1955

E benvarnden@onetel.net.uk

www.benvarnden.com



Benvarnden Gardens

Carnfunnock Country Park



Carnfunnock Country Park

(Coast Road, Larne)

Country park consisting of 473 acres of mixed woodland, colourful gardens, ponds, walking trails and coastline. Attractions include walled garden with unique sundials, maze, orienteering course, adventure playground, miniature railway, caravan park and camp site, golf activities and modern visitors centre with gift and coffee shop.

Open daily.

Admission charge to car park.

T 028 2827 0541

T 028 2826 0088

E carnfunnock@btconnect.com

www.larne.gov.uk/carnfunnock.html

Joey Dunlop Memorial Garden



Hazelbank and Jordanstown Parks

(Foreshore, Newtownabbey)

Jordanstown Loughshore and Hazelbank Park provide some of the best shoreline walks and cycle paths around Belfast Lough. In addition, the 9 mile Millennium Way is a unique recreational path which links many of the villages edging the lough from Whitehouse to Whiteabbey.

T 028 9034 0000

Joey Dunlop Memorial Garden

(Castle Street, Ballymoney)

In memory of this uniquely special man, the garden is a fitting tribute to one of Ballymoney's greatest ambassadors, who won five Formula One World Championships, 13 North West 200 Races, 24 Ulster Grand Prix and a world record 26 wins in the Isle of Man TT Races. In this excellent setting you will have time to reflect on the achievements of the legendary Joey Dunlop MBE, OBE.

T 028 2766 0230
www.ballymoney.gov.uk

Riverside Park

(Armour Avenue, Ballymoney)

Forty acres of open parkland in the heart of Ballymoney. The park offers riverside walks, cycle paths, lake with ducks, children's play area, band stand and sculpture trail. Admission free.

Open April-Sept
9.00am-9.00pm daily.
Open Oct-March
10.00am-5.00pm daily.
T 028 2766 4962
T 028 2766 0231
www.ballymoney.gov.uk

Roe Valley Country Park

(Dogleap Road, Limavady)

Beautiful riverside walks await the visitor here as well as a countryside museum. Visitors Centre open all year around with extended hours in the summer.

Green Lane Museum
Open Easter-September.
Admission free.
T 028 7772 2074
www.ehsni.gov.uk

Sentry Hill

(Ballycraig Road, Newtownabbey)

This Victorian farmhouse and garden tells the story of the McKinney family, and of many rural families in Ulster during the 19th and 20th Centuries. The family collection includes furniture, paintings, personal diaries, letters and photographs recording life at Sentry Hill and its surrounding areas. Visitor Centre, guided tours, tea-room, exhibition gallery, AV presentation.

Admission charge.
T 028 9083 2363
www.newtownabbey.gov.uk

Carrickfergus Museum and Tourist Information Centre

(Antrim Street, Carrickfergus)
Explore the history of Carrickfergus from pre-historic times to the present day. Material from the Council's own civic collection, together with Carrickfergus related material on loan from several private and national collections are on display. The separate 'Community Archive' features 20th century local and social history material, relating to the Borough's recent past. Admission free.

Open all year.

T 028 9335 8049

F 028 9335 0350

E touristinfo@carrickfergus.org

www.carrickfergus.org

White Park Bay - ASSI

(A2, 1.5 miles west of Ballintoy, 4 miles east of Giants Causeway).

White Park Bay is a 2.5km sandy beach backed by a huge mosaic of grassland types and scrub.

The bay is of particular interest from geological, botanical and archaeological perspectives.

Access all year.

Car park charge applies.

April-September weekends.

Wheelchair access is limited.

E giantscauseway@nationaltrust.org.uk

www.ntni.org.uk

There is so much to see and experience, so many more places to visit and explore. Whilst the above list suggests the enormous variety within the region, this is only a selection of everything which the Causeway Coast and Glens has to offer.

The list could go on and on but try not to miss the windswept castles of Kenbane and Dunseverick, the dramatic views from Fair Head and Torr Head, the beauty of Cranny Falls and Gleno Waterfall, 'Capital of the Glens' - Cushendall, Loughareema the 'vanishing lake', the crescent shaped Murlough Bay, the picturesque little harbours at Portbradden and Ballintoy, the history evoked by Ossian's Grave, Turnly's Curfew Tower in Cushendall, Red Bay Castle near Waterfoot, the Round Tower at Armoy, Layde Old Church or Bonamargy Friary. **Take time, experience it all.**

Roe Valley



Carrickfergus Museum



White Park Bay



Giant's Head

craic and **culture**

For culture or craic, fast food or fine dining, you will always be well catered for on the Causeway Coast and Glens.



Don't be surprised if on your travels you come across music and dancing in the streets for this is a region famous for its 'fleadhs' or festivals. If eating out is your pleasure, whether your tastes are gourmet or casual, exotic or traditional there is a restaurant, bistro or wine bar to answer your needs. And to round off an evening why not dance into the early hours at a top class nightclub or disco. Or if you prefer, singalong and tap your feet in time with the music in a traditional pub with a wee dram or two of Bushmills whiskey!

Ballymoney Drama Festival

(Town Hall, Ballymoney)
One of the oldest festivals in Ireland attracting leading dramatic societies from all over the Province during March. Plays performed range from modern American to those of local playwright George Shiels.

Admission charge. March.

T 028 2766 0230

E info@ballymoney.gov.uk

250TH Ballyclare May Fair

(The Square, Ballyclare)
Watch intense negotiations between traders as horses are bought and sold on the shake of a hand. Community festival with funfairs, shopping and events.

May.

T 028 9034 0000

Coleraine Community and Arts Festival

A varied programme of arts and cultural activities and community performances around the Coleraine area. Folk, jazz, classical and popular music included.

Late June.

T 028 7034 4723

Great Craic



Larne Alive Festival

A month long summer festival taking place at weekends in June. Entertainment includes: Elvis Spectacular, steam train rides, vintage bikes, steam engines, Moulin Rouge Circus Spectacular, Picnic in the Park with music, clowns and funfair rides and science show, Safari train and street entertainers, Buskfest busking competition.

Weekends in June.

Phone for full programme.

T 028 2826 0088

www.larne.gov.uk

The Danny Boy Festival

(Limavady)

Colourful and vibrant community festival taking place over the weekend including music, arts, cultural and sporting events.

Mid August.

T 028 7776 0304

Rural Heritage Festival

(Limavady)

Festival celebrating historical heritage, traditional crafts and the rural way of life.

August.

T 028 7776 0304

Ballymoney Agricultural Show



Irish Dancing



Ballyclare May Fair



Ballymoney Mayor's Show

A great day of family entertainment with music, dancing, competitions and street entertainers, culminating in a grand parade, incorporating vintage cars, steam engines, motorcycles and floats.

Last Saturday in June.

T 028 2766 0230

E info@ballymoney.gov.uk

Ballymoney Agricultural Show

(Showgrounds, Ballymoney)

The North Antrim Agricultural Show at Ballymoney Showgrounds is one of the oldest shows in Ireland. It is held on the first Saturday of June each year and is run by three local Young Farmers' Clubs. A great family day out for all those with rural interests.

T 028 2075 1327

F 028 2075 1162

E anne.morrison@naaa.co.uk

www.naaa.co.uk

Milk Cup



Feis na nGlenn

(Glens of Antrim)

Traditional Irish music, dancing and culture form the basis of this annual festival hosted by Moyle District Council. Venues change every year. Includes an Arts and Crafts competition.

June.

T 028 2076 2024

Ballycastle Fleadh

This annual weekend of traditional song and dance attracts visitors from all over. Enjoy the Irish music and dancing staged in the Diamond of Ballycastle during the day, moving into the local pubs at night.

Third weekend in June.

T 028 2076 2024

Glenarm Castle



NI Milk Cup

Watch some of the world's budding young footballers as they congregate in Ballymoney, Coleraine and Limavady for this annual tournament of top teams from five continents.

31 July-4 August 2006.

T 028 7034 4723

Glenarm Castle Open Days

(2 Castle Lane, Glenarm)

Open days on 13 and 14 July 2006 will include World Series Championship Highland Games and Europe's Strongest Woman Competition.

13 and 14 July 2006.

T 028 2884 1203

F 028 2884 1305

E info@glenarmcastle.com

www.glenarmcastle.com

Medieval Lughnasa Fayre



Limavady Jazz Festival



Catch the Wave - A Celebration of the Sea

(Carrickfergus Borough)

Don't miss the series of uniquely-themed events under the banner of the 'Catch the Wave in Carrickfergus'. With the beautiful loughshore setting of Carrickfergus Borough, the series of events will aim to celebrate the Borough's unique culture, which is inextricably linked to the sea!

Easter-Halloween 2006.

Further information on the programme of events can be obtained by contacting Carrickfergus Tourist Information Centre.

T 028 9335 8049

www.carrickfergus.org.

Medieval Lughnasa Fayre

(Carrickfergus Castle)

Soak up the Medieval atmosphere and enjoy costumed performers and period musicians. Sample traditional foods and take home a memento from the various craft stalls.

Last Saturday and Sunday in July.

T 028 9335 1273

www.ehsni.gov.uk

Heart of the Glens Festival

(Cushendall)

Join the festivities for several days in August when visitors and locals sing, listen and dance together from morning to night during this traditional Irish festival.

Mid August.

T 028 2177 1378

Coleraine and District Motor Club - NW 200

(Coleraine/Portrush/Portstewart)
Coleraine and District Motor Club promote the International North West 200, held each year in May. The event runs from Portstewart, Coleraine and Portrush and regularly attracts crowds of over 120,000 spectators.

North West 200. 13 May 2006.
T 028 7035 5800
E mervynwhyte@aol.com
www.northwest200.fm

Ould Lammas Fair

(Ballycastle)

One of Ireland's oldest fairs. Livestock sales and countless stalls sell souvenirs and bric-a-brac of every description. Sample the local specialities - 'dulse' a dried edible seaweed, and the deliciously sweet chewy toffee 'yellow man', made from a closely guarded secret recipe.

Last Monday and Tuesday in August.
T 028 2076 2024

Carnlough Carnival

Including vintage rally and craft display.

July/August.
T 028 2884 1005



Ould Lammas Fair



Ballyearl Courtyard Theatre

THEATRES**Ballyearl Courtyard Theatre**

(585 Doagh Road, Newtownabbey)

The base for all sorts of arts activities from craft classes, photography and exhibitions to cultural events and drama festivals.

T 028 9084 8287

Flowerfield Arts Centre

(Portstewart)

The Centre reopened in 2002 following major refurbishment and offers a wide variety of courses, events and activities for both adults and children throughout the year. The centre has just re-opened following major refurbishment and new facilities include a multi-purpose auditorium, dedicated galleries, teaching facilities, professional craft studios, a craft shop, reception and coffee bar.

T 028 7083 1400

F 028 7083 1432

E info@flowerfield.org

McNeill Theatre

(Tower Road, Larne)

A popular theatre venue for touring and amateur productions, representing the full spectrum of the Arts. Full access for disabled patrons and home to Larne Drama Festival which takes place in March.

T 028 2826 0478

Portrush Summer Theatre

(Portrush Town Hall, Portrush)

A seasonal programme of amateur productions, four days per week.

Throughout July and August.

T 028 7082 2500

T 028 7034 4723

Riverside Theatre

(University of Ulster Campus, Coleraine)

A regional theatre with a full programme of performances and exhibitions throughout the year. Licensed bar, confectionery and ice cream. Disabled access, four wheelchair spaces in auditorium and an induction loop system.

T 028 7032 3232

F 028 7032 4924

shopping and galleries

Come shopping in the Causeway Coast and Glens, you're sure to find exactly what you want.



We can offer everything from traditional craft shops specialising in world-famous Irish linen and china to familiar High Street names - and you can be sure of a warm welcome wherever you go.

Bannside Craft Shop and Tea Room

(11 Ballymena Road, Portglenone)
Sale of Irish-made souvenir goods.
Crystal, china, peat, Aran knitwear, candles and many more.

Open daily 9.30am - 5.30pm.

T 028 2582 1754

F 028 2582 0104

Creative Gardens - Bushmills Garden Centre

(88 Ballyclough Road, Bushmills)
Two miles from the Giant's Causeway lies the award winning Bushmills Garden Centre. Enjoy a stroll around the extensive outdoor living range, the inspirational displays of beautiful plants and gifts or treat yourself to superb home-cooked food in the café.

T 028 2073 1287

F 028 2073 2395

E bmgc@creativegardens.net

www.creativegardens.net



Coleraine Town Centre



Junction One

Elements Studio Ceramics

(12a Mussenden Road, Downhill, Castlerock)
 Elements Studio, Downhill, should not be missed by anyone interested in arts and crafts on the Causeway Coast. The studio produces handthrown pottery, mosaics and cards, which are for sale in the studio showroom. In the afternoon there are pottery painting sessions for all ages during which you can paint and decorate pieces of pottery and have them fired in the studio kilns. Pottery painting sessions can be booked for groups and parties as well. The studio offers workshops in ceramics, mosaics and papermaking throughout the summer. Ring for the current workshop schedule.

Open Mon-Sat
 12.00pm-5.00pm.
 T 028 7084 9077
 E info@elementsstudio.com
 www.elementsstudio.com

Gloonan Gallery

(13 Church Street, Ahoghill, Ballymena)
 Original paintings, cards and stationery, pottery and books, visitor information. Wide range of gift ideas on two floors.

Open 10.00am-5.15pm. Tues-Sat
 T 028 2587 8470
 www.gloonangallery.net

Island Irish Art

(The Island, 49 Ballyrashane Road, Coleraine)
 Gallery specialising in works of art by collectible Irish artists, 20th Century and contemporary works on display in ongoing exhibitions. Free admission.

Open Mon-Sat
 11.00am-7.00pm.
 T 028 7034 2599
 F 028 7032 8137
 E mccollum@islandirishart.com
 www.islandirishart.com

During a holiday to the Causeway Coast and Glens, some shopping is a must. For a one-stop shopping experience try the extensive mall at Newtownabbey or browse along the High streets of major retailing centres like Coleraine and Ballymena. Don't forget the many smaller towns and villages where specialist craft and antique shops are just waiting to be discovered.

Pretty Crafty Design Studio

(5 Springbank Road, Castlerock)
 Winners of Customer Service 2005.
 Set in the middle of the Downhill Forest, opposite Mussenden Temple - a unique location and experience. Working craft studio. Join us for a cup of tea and visit our workshop, gallery, showroom and bird petting garden.

T 028 7084 8146
 F 028 7084 8270
 E prettycraftydesignstudio@yahoo.co.uk
www.prettycraftydesign.com

R&J Hillis

(27-29 Main Street, Portrush)
 Traditional Irish Craft Shop offering a wide range of gift and craftware. We also offer men's, ladies' and children's fashions.

T 028 7082 3203
 F 028 7082 2052
 E rj_hillis@hotmail.com
www.giftwareireland.com

Junction One International Outlet Shopping

(Antrim, BT41 4RG)
 Northern Ireland's first international outlet shopping centre with High Street giants, designer and international brands at discounts up to 60% everyday. Over fifty stores.

Open 7 days a week
 Mon-Wed 10.00am-6.00pm
 Thurs-Fri 10.00am-9.00pm
 Sat 9.00am-6.00pm
 Sun 1.00-6.00pm
 T 028 9442 9111
 F 028 9442 5850
 E eimear@junctionone.co.uk
www.junctionone.co.uk



Entente Florale Winner - Broughshane Village

great food **and** drink

Throughout the Causeway Coast and Glens there are hotels, restaurants and pubs to suit every pocket.



With this region's rich tradition of culinary expertise and an abundance of the freshest seafood, vegetables and meats we're sure that you'll enjoy an excellent meal wherever you may find yourself. However, we would especially recommend the following establishments for everything from a quick drink to a complete gourmet evening.



55° North

(1 Causeway Street, Portrush)
55° North is the Causeway's newest restaurant set in the heart of Portrush with breathtaking views overlooking the Skerries Islands, East Strand and Scotland.

T 028 7082 2811
E mail@55-north.com
www.55-north.com

Central Bar

(12 Ann Street, Ballycastle)
A traditional bar, dating back to 1861, which has been lovingly restored and cared for by its owners. Traditional musicians play every Wednesday night and live music every weekend. No better place to be, by far enjoying a drink.

T 028 2076 3877
E centralbar@btinternet.com



The Nook at the Giant's Causeway

(48 Causeway Road, Bushmills)
Listed building of historical significance, formerly the Causeway School, sympathetically refurbished. Located at the entrance to the World Heritage Site, enjoying an excellent reputation using only local produce.

T 028 2073 2993
F 028 2073 2993

The Distillers Arms

(140 Main Street, Bushmills)
Contemporary, modern Irish restaurant in the heart of Bushmills. Open daily for lunch and dinner in summer and for dinner in winter. Traditional music every Thursday evening in the summer.

T 028 2073 1044
F 028 2073 2843
E simon@distillersarms.com
www.distillersarms.com

Dolphin Travellers Rest

(23 Gortnaghey Road, Dungiven)
The Dolphin Travellers Rest is situated in the heart of the beautiful Sperrins on the banks of the River Roe. A warm welcome awaits you, meals served all weekend and live entertainment every Friday, Saturday and Sunday evenings.

T 028 7774 1289
F 028 7776 9715
E dolphintravellersrest@hotmail.com

Sweeney's Wine Bar

(6 Seaport Avenue, Portballintrae)
Built in 1770 but now with magnificent glass conservatory overlooking bay providing brasserie style food all year round. This restaurant has been highly renowned since first opening in 1989.

T 028 2073 2405
F 028 2073 1850



In addition to the many hotels in the area, which offer a large variety of culinary experiences to suit all tastes, the following establishments also have restaurants and bars available for non-residents.

Ballycastle	Glenluce Guest House Tea Room
Ballymena	The Battery Inn
Ballymena	Marlagh Lodge (winner of Les Routiers award 2004)
Ballymoney	Harmony Hill
Ballintoy	Fullerton Arms
Bushmills	Ahimsa (vegetarian, phone to book)
Carnlough	The Bridge Inn
Cushendun	The Villa Farmhouse
Giants Causeway	Smugglers Inn
Larne	The Hayloft
Portstewart	The Anchorage Inn
Portstewart	Cromore Halt Inn
Rathlin Island	The Manor House (phone to book)

Phone numbers for the above properties can be found in the accommodation section of this guide.

family fun

Sunny days or cloudy skies there is something to do no matter what the weather. From bucket and spade fun to the thrills and spills of waterslides and white knuckle rides the Causeway Coast and Glens offers families first class fun!



Benone Tourist Complex

Barrys, Portrush



Barry's Amusements

(16 Eglinton Street, Portrush)
Established for over 70 years, Barry's is the largest amusement park in Ireland with the very latest rides for indoor and outdoor entertainment.

Open Easter-May
weekends and public holidays.

Open June-first week Sept daily.

T 028 7082 2340

F 028 7082 4436

E info@barrysamusements.com

www.barrysamusements.com

Benone Tourist Complex

(53 Benone Avenue, Limavady)
Backed by the golden sands of Benone Beach, Benone Tourist complex comprises: touring caravan park, 9 hole golf course, putting green, golf practice range, bowling green, tennis courts, outdoor heated splash pools and activity area. Summer events programme. Pools seasonal. Café

Open Easter-Sept.

Admission charge per activity.

T 028 7775 0555

F 028 7775 0919

E [benone.complex@](mailto:benone.complex@limavady.gov.uk)

limavady.gov.uk

www.limavady.gov.uk

The Crescent, Portstewart



Dunluce Centre

(10 Sandhill Drive, Portrush)
Voted Best Visitor Attraction in Northern Ireland for 2002. Treasure Fortress, a stimulating high tech treasure hunt, and Finn McCool's Adventure Playground, a 3 floor themed interactive game environment, are two major attractions which opened Easter 2002. Firm favourite, 4D Turbo Tours, is the ultimate American thrill ride and will cast the audience into new worlds. A café, shops and tourist information centre are also incorporated. Groups and birthday parties by appointment.

Portrush Puffer



Admission charge.
Open Easter 14-23 April
10.30am-6.30pm daily.
Open April and May
Sat and Sun 12.00pm-6.00pm.
Open June
Mon-Fri 12.00pm-5.00pm
Sat and Sun 12.00pm-6.00pm.
Open July and August
10.30am-6.30pm daily.
Open Sept-March
Sat and Sun 12.00pm-5.00pm.
The centre is open all year to large groups who have prebooked the facilities.

T 028 7082 4444
F 028 7082 2256
E dayout@dunlucecentre.freerve.co.uk
www.dunlucecentre.co.uk

Leslie Hill Open Farm

(Leslie Hill, Ballymoney)

Beautiful Georgian Estate with period mansion, lakes, mature trees and farmyard with animals, birds, huge collection of horse drawn machines, walled garden, deer park, adventure playground, shop and teashop. Horse and wagon and pony rides. This is by a long way the biggest open farm in Northern Ireland with the most variety.

Admission Charge.

Open Easter-end May
Sun and Bank Holidays
2.00pm-6.00pm.

Open June

Sat and Sun 11.00am-6.00pm.

Open July and Aug

Mon-Sat 11.00am-6.00pm

Sun 2.00pm-6pm.

Pre-booked schools and groups
at any time.

T 028 2766 3109 / 6803

F 028 2766 6803

www.lesliehillopenfarm.co.uk

Portrush Puffer

(from Portrush Tourist
Information Centre)

Northern Ireland's first passenger
road train operated by Translink
in conjunction with Coleraine
Borough Council.

Regular timetabled circuit of
Portrush operating July and August.
Disabled access. Fare applies.

T 028 7032 5400

Portstewart Crescent

(The Promenade, Portstewart)

Motorised bumper boats, bouncy
castle, bouncy slide, motorised
cars, go-kart track, moonwalk,
sumo suits and gladiator joust.
Café and toilets on site. The
bandstand area provides an ideal
setting for concert and street
entertainment with tiered seating
giving a 'theatrical effect'.

Seasonal opening only.

T 078 7988 6005 or

T 028 7034 7234



Giant's Causeway and Bushmills Railway



Downhill Beach



Waterworld, Portrush

Roe Valley Leisure Centre

(9 Greystone Road, Limavady)
Roe Valley Leisure Centre boasts a 25m indoor pool, splash pool, squash and badminton courts, state of the art fitness suite, modern health suite and 'Hideaway Hall' - an indoor adventure play area and ball park. It also offers extensive conference facilities.

T 028 7776 4009

F 028 7776 7947

E rvlc@limavady.gov.uk

www.limavady.gov.uk

Giant's Causeway and Bushmills Railway

(Runkerry Road, Bushmills)
The Giant's Causeway and Bushmills Railway provides a passenger link between the town of Bushmills and the Giant's Causeway World Heritage Site. The Giant's Causeway Station offers facilities including a picnic area, café, rest rooms, souvenir shop and carpark.

Open St. Patrick's weekend, Easter, then every weekend until end June. July-Aug daily, then weekends until October.

T 028 2073 2844

F 028 2073 2844

E infogcbr@btconnect.com

www.giantscausewayrailway.org

The Arcadia

(Portrush)

The Arcadia has had a complete 'make over' and now houses a coffee shop and superb imaginative children's play area, with paddling pools, giant sand toys, rope swings and climbing frames. Fantastic views of East Strand and Whiterocks.

Seasonal opening.

T 028 7082 3924

Portrush Countryside Centre

(8 Bath Road, Portrush)

Providing a modern exhibition area and facilities including: the Nautilus under the sea exhibition, indoor rock pool, 'the story rocks and fossils tell' and AV theatre. Beside the centre is Portrush Nature Reserve, a small area of seashore rock that has helped us understand the way in which the earth was formed. Activities include: rock pool rambles and dipping, fossil hunts and bird watching.

Open July-August

10.00am-6.00pm daily.

T 028 7082 3600

F 028 7082 3269

www.ehsni.gov.uk

Waterworld

(The Harbour, Portrush)

Unique indoor attraction featuring water cannons, 85m waterslides, jacuzzis, kiddies play pool and aquarium. The centre also boasts a 6 lane 10 pin bowling alley, featuring state of the art technology yet is simple to use. Café. Disabled access throughout.

Admission charge.

Open Easter-Sept

(however, the bowling alley is open at weekends all year round).

T 028 7082 2001

F 028 7082 3078

Every major town from Limavady to Larne, Ballymoney to Ballyclare has a fully equipped Leisure Centre. Dynamic indoor activities are complemented by the wealth of activities offered by the miles and miles of golden beaches skirting the entire region. Pride of place goes to the region's five award winning beaches at Portrush's West and East Strand, Portstewart strand, Whiterocks Portrush and the seven mile stretch at Benone Strand, where at each the Blue Flag, symbol of quality, flies high.

enjoy the **outdoors**

Pull on your walking boots, hook up your waders or dispense with footwear altogether and jump into activity mode. Whether you want to watch or participate there are sports and leisure activities in abundance on the Causeway Coast and Glens.



ACTIVITY CENTRES

North Irish Lodge PADI Dive Resort and Award Winning Cottages

Scuba diving/Sea-Safari's/Boat Trips/Boat Charter/ROV Camera available for commercial hire (piloted). New 10 metre state of the art passenger vessel - complete with the latest technology 2 x 200 Mercury Verado engines. Licenced for 12 passengers/divers plus 2 crew. Operating dive trips to Rathlin/Donegal/Campbeltown/Antrim Coast/ wrecks around the Maidens, Islandmagee. Sea Safari's running May-December. Visit the porpoises and seals in their natural habitat, witness the spectacular bird life at the Gobbins Cliffs. Package dive trips available. Stay in our Award Winning Cottages in Islandmagee. PADI Dive School on site offering full range of courses, dive shop, air to 232 bar, equipment hire.

T 028 9338 2246

F 028 9338 2246

E caroline@activityholsni.co.uk
www.northirishlodge.com

Aquaholics

(14 Portmore Road, Portstewart) PADI Dive Centre providing dive courses for beginners to experienced divers. Also power boat trips along scenic Causeway Coast. Fully stocked shop and range of wrecks, reefs and drop-offs for experienced divers.

T 028 7083 2584

F 028 7083 2584

E dive@aquaholics.org

www.aquaholics.org



Scuba-diving

ACTIVITY CENTRES

Wild Geese Parachute Centre

(116 Carrowreagh Road, Garvagh)
Parachute centre offers: one day training course using square parachute which is automatically opened by static line: tandem sky-diving where student is attached to instructor throughout entire descent. Public welcome.

T 028 2955 8609

F 028 2955 7050

E parachute@wildgeese.demon.co.uk

www.wildgeese.demon.co.uk

Moorbrook Trout Fishery

(46 Glebe Road, Castlerock)
Moorbrook Fishery is set in 20 acres of unspoilt countryside with views from Downhill to the Causeway. Stocked with brown/rainbow trout up to 20lb. Qualified GAIC instructor and fully stocked tackle shop on site with brands such as Hardy/Greys, G Loomis and Airflo. Flyfishing only.

T 028 7084 9408

E stephanie@moorbrooklodge.freepreserve.co.uk

www.moorbrookfishery.com

MARINAS

Ballycastle Marina

(Ballycastle)
Ballycastle's superb 74 berth Marina is situated on the spectacular North Antrim Coast. It offers excellent scope for marine travel around Ireland and to Scotland. Blue Flag Award Winner.

T 028 2076 8525

M 07803 505084

E ballycastlemarina@moyle-council.org

www.moyle-council.org

Carrickfergus Marina

(3 Quayside, Carrickfergus)
Carrickfergus has a world class 300 berth marina, with excellent private and public amenities, conference facilities, and local information point. The marina is flanked by attractive promenades, piazza, cinema and a choice of cafés and restaurants. Awards include: 5 Gold Anchor, European Blue Flag, RYA Berthholder Charter and Sailability Centre for Disabled Sailing.

T 028 9336 6666

F 028 9335 0505

E marinarec@carrickfergus.org
www.carrickfergus.org

Drumaheglis Marina and Caravan Park

An award winning park situated on a beautiful stretch of the lower River Bann. 53 fully serviced hard standing pitches, boat park, slipway, jetty, volleyball, table tennis, nature walk, play area, picnic and barbeque areas.

T 028 2766 6466 / 0227

F 028 2766 7659

E helen.neill@ballymoney.gov.uk

www.ballymoney.gov.uk

Glenarm Marina

Glenarm Harbour offers 40 fully serviced pontoon berths within the village's historical limestone harbour, which is ideally situated within a day's sail of the Western Isles and Clyde.

For more details please telephone

T 028 2884 1285

T 07703 606763 (Harbour Master)

www.larne.gov.uk/glenarm

Coleraine Marina

On the River Bann one mile north of Coleraine and 4.5 miles south of the Bann Estuary at Portstewart. An ideal sheltered marina with facilities for visiting crafts up to 60 feet.

T 028 7034 4768



Drumaheglis Marina, Ballymoney

EQUESTRIAN PURSUITS**Maddybenny Riding Centre**

(20 Maddybenny Park, Coleraine)
BHS approved Riding Centre,
with all facilities for all standards
of riders. On site award winning
B&B and 6 self catering cottages
(1 disabled) and liveries. Near
Causeway Coast, beaches, golf
and university.

T 028 7082 3394

E riding@maddybenny.com

www.maddybenny.com

FISHING / ANGLING / BOATING**Albert Atkins**

(71 Coleraine Road, Garvagh)
Manufacturer of salmon and trout
flies. Retail fishing tackle and
clothing. Hire fishing rods for game
angling. Gillie service and mail
order available.

T 028 2955 7691

F 028 2955 7692



Cycling on the Causeway Coast & Glens



Fishing

Glenarm Castle Estate

(2 Castle Lane, Glenarm)

Salmon and trout fishing from March–October. Day rods available. Personal tuition and expert training on falconry (tel: 028 2884 1694). Displays given in castle grounds from Easter to October.

T 028 2884 1203

F 028 2884 1305

E info@glenarmcastle.com

www.glenarmcastle.com

Sea Treks Ireland

(21 Fairhead View, Ballycastle)

Comfortable seats with integral safety belts, generous leg room, panoramic views and first class service. Sea Treks custom built boats transport you quickly, to scenic coastal locations or remote secluded islands.

T 028 2076 2372 or

T 028 2076 9610

F 028 2076 2372

E info@seatreks-ireland.com

www.seatreks-ireland.com



Carrickfergus Marina

around **and about**

The scenery of the Causeway Coast and Glens is surely amongst the most beautiful in the world. There is a host of ways to see it. Whether you want to do the work yourself on foot or bicycle, see the land from the sea or let someone else do the driving, we have a wide range of options for you.



COACH, TOURS AND RAIL TRAVEL**Mini Coach Travel**

(Unit 27 Sommerton Industrial Park, Belfast)

Tours of Belfast and North Antrim Coast. Departing daily from Belfast International Youth Hostel to Giant's Causeway. Travel along the coastal route of the North Antrim Coast and the green Glens of Antrim. The tour includes visits to Bushmills Distillery, Carrick A Rede Rope Bridge and Giant's Causeway. (Also private hire).

T 028 9077 7440

F 028 9077 7441

E info@minicoachni.co.uk

www.minicoachni.co.uk

Translink

(East Bridge Street, Belfast)

Bus and Rail Services throughout Northern Ireland and Cross Border.

T 028 9066 6630

F 028 9038 7506

E feedback@translink.co.uk

www.translink.co.uk

Translink (NI Railways)

Discover the Causeway Coast with NI Railways. Your rail journey between Londonderry and Coleraine will allow you to experience the stunning and breathtaking scenery of the spectacular Causeway coastline.

Translink (Ulsterbus)

Explore the spectacular Antrim coastline with Ulsterbus. The Antrim Coaster 252 'day return' ticket is terrific for a day out, or look out for the Causeway Rambler; this little accessible bus takes in all of the main attractions from Bushmills to Carrick-a-Rede. For a novel experience why not make a trip on the 'Open Topper' or 'Portrush Puffer' - great for the kids. Ulsterbus, your journey, your destination.



Coach Tours

FERRY TRAVEL

P&O Irish Sea

(The Terminal Building,
Larne Harbour, Larne)

P&O Irish Sea operate the shortest fastest crossing between Scotland and Ireland. Cruise across from Cairnryan to Larne on our excellent 105min superferries all year round on a choice of 7 return crossings daily. Or travel fast class on our seasonal fast ferry service operating from March to October. You can vrrrooom from Troon in just 2 hours or from Cairnryan in just 1 hour to Larne. There is no faster way to drive across the Irish Sea!

T 0870 2424 777

F 028 2887 2195

E reservations@poirishsea.com
www.poirishsea.com

Caledonian MacBrayne

(The Ferry Terminal, Gourock)
Ferry operator to Clyde and Hebridean Isles of Scotland and Ballycastle-Rathlin Island car ferry service in Northern Ireland.

T 01475 650 100 (Gourock)

F 01475 650 262

T 028 2076 9299 (Ballycastle)

F 028 2076 9298

E Deborah.brown@calmac.co.uk
www.calmac.co.uk

Lough Foyle Ferry Company

(The Pier, Greencastle, Co.Donegal)
Car and passenger ferry operating between Magilligan, Co L/Derry and Greencastle, Co Donegal. Operates a continuous shuttle service from April to September, and scheduled service from October to March. Crossing approximately 10 minutes resulting in a saving of 78kms (49 miles) driving. Fares paid on board. No advance booking required.

T 00 353 7493 81901

F 00 353 7493 81903

E info@loughfoyleferry.com
www.loughfoyleferry.com



P&O Ferry

Norse Merchant Ferries

(Victoria Terminal 1
Dargan Road, Belfast)
Norse Merchant Ferries offer direct sailings from England to Ireland. The services operate from Liverpool (Birkenhead) to Belfast and Dublin offering a choice of day and night sailings. The vessels carry Cars, Caravans, Motorhomes, Trailers, Motorbikes, Coaches and Foot Passengers and your fare includes meals onboard.

T 00 353 1 819 2999 (RoI)

T 0870 600 4321 (UK)

www.norsemerchant.com

Stena Line

(Prince's Dock, 14 Clarendon Road, Belfast)

Stena Line, the world's leading ferry company offers the shortest, fastest crossing from Scotland to Belfast aboard the superb Stena HSS, the world's largest fast ferry, speeding you over in just 105 minutes. With superb onboard facilities for everyone this is by far the best way to sail to the Causeway Coast and Glens.

T 08705 204 204

www.stenaline.co.uk

TOUR OPERATORS / GUIDES

Golf-NI

(9 Hollybrook Grove, Newtownabbey)
Chauffeur driven golf breaks to some of the finest links courses in the world. Book with Golf-NI, the local golf tour operator offering world class golf with just one phone call.

T 028 9083 3128

M 07749 807 311

E davy@golf-ni.com

www.golf-ni.com

Irish Cycle Tours and Walks

(6 Church Street, Tralee, Co Kerry)
Offering cycling and walking holidays through the magnificent Glens of Antrim and alongside the breathtaking North Antrim coastline. Choose from a six day independent walking tour or a one week, long weekend or specifically designed cycle tour to suit your needs. All tours include route notes, maps, named accommodation, luggage transported and bicycle. Offering value for money and top quality service.

T + 353 (0) 66 712 8733

F + 353 (0) 66 712 8762

E info@irishcycletours.com

www.irishcycletours.com

TOUR OPERATORS / TOUR GUIDES

Causeway Quest

(Bushfoot House, Portballintrae)
We provide audio-visually enhanced guided tours of the Causeway Coast, visiting all key locations. Our tours incorporate the knowledge and experience of a local guide. For younger participants, we have developed 'kidsquest', a fun, interactive and participative learning experience.

T 028 2073 0364

F 028 2073 1715

E info@awakin.com

www.awakin.com

Jennifer McLernon

Tourist Guide

(1 Westbourne Avenue, Ballymena)
Half-day and full-day guiding services to lesser known areas of Ulster: the ancient Sperrins, mystical Lough Neagh, Lower River Bann and into the green Glens of Antrim. Advanced National Certificate in Tour Guiding.

T 07709 523 116

E jennifermclernon@tiscali.co.uk

www.jennifermclernon.co.uk

Celtic Trekking

(107 Magheramenagh Drive, P'rush)
Guided walking on the Causeway Coast and Glens with an emphasis on history, archaeology, geology and culture in the company of Dave Southall, Ireland's only combined Blue Badge Guide and professionally qualified Mountain Leader.

T 028 7082 9698

E davewsouthall@hotmail.com

Leisure Breaks

(33 Dovedale Road, Liverpool)
Family-run tour operators specialising in travel to Ireland by sea and air for 25 years. Three brochures and programmes: Leisure Breaks, Leisure Angling and Leisure Golf.

T 0151 734 5200

F 0151 734 5199

E info@irelandbreaks.co.uk

www.irelandbreaks.co.uk

Welcome-Ireland

(10 Glenloch Park, Coleraine)
One to one tourism and event management - a personalised service with attention to detail.

T 028 7035 2864

E welcomeireland@yahoo.co.uk

www.welcome-ireland.com

Tours N Trails

(12 Slieve Banna, Coleraine)
Guided tours tailored to your needs. Specialisms include: Causeway Coast and Glens, City of Derry, Inishowen, hillwalking, folk music, history, theatre, World War II, culture and heritage.

T 028 7035 5680

F 028 7035 5680

E jmcgillan@hotmail.com or
toursntrails@aol.com

North & West Coast Links

(9 An Fuaran, Moycullen, Co Galway)
Eleven of the best links golf courses in north and west of Ireland form one marketing organisation. We promote each of the courses on the world stage. We offer a tee time reservation service to both tour operators and the general public.

T 00 353 9186 8642

F 00 353 9186 8645

E wclgolf@iol.ie

www.northandwestcoastlinks.com



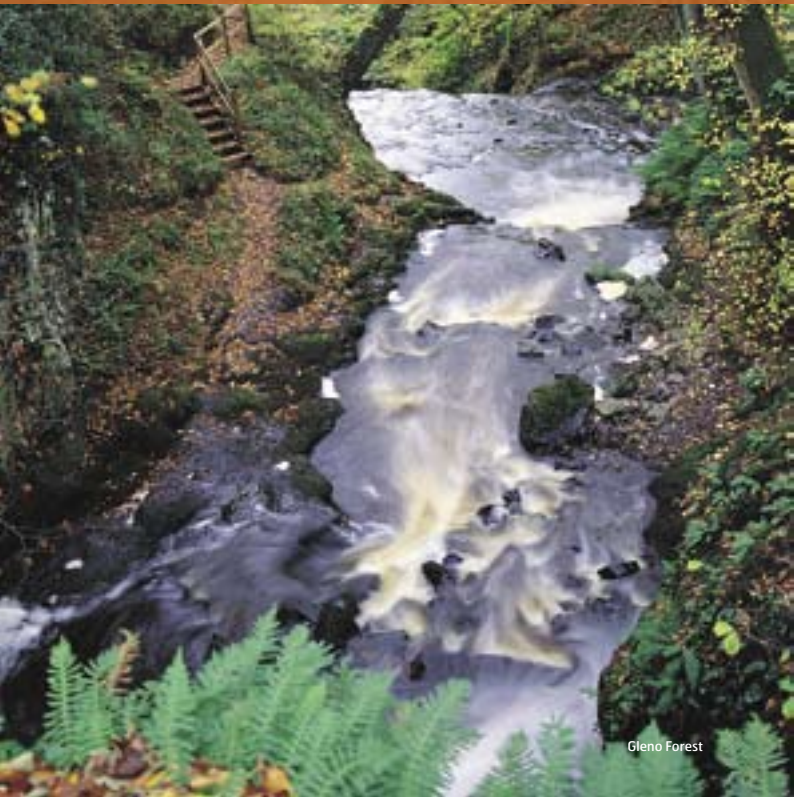
Causeway Coastal Path



Strand Course, Portstewart

forest parks

The peace, tranquillity and beauty of the Causeway Coast and Glens' magnificent forest parks are the stuff of legend.



Glenariff Forest Park

(Waterfoot)

Spectacular glen walks and waterfalls await you at Glenariff Forest Park whose scenic paths and trails lead through tranquil woods and up to magnificent mountain viewpoints.

Open all year. 10am-dusk.

Café, Exhibition Centre, Toilets, Picnic Areas and Disabled Access. Admission charge.

T 028 2955 6000

Portglenone Forest

(On A42, Ballymena Road)

Just south of Portglenone is this ancient area of tree cover. Impressive displays of bluebells, wood anemones and wild garlic in spring. Magnificent walks through mostly broadleaved trees and along the River Bann.

Open all year. 10am-dusk.

Picnic Areas, Toilets and Disabled Access. Admission charge.

T 028 2955 6000

Ballypatrick Forest

(On A2, South East of Ballycastle, signposted)

Five-mile drive through peatland forests with many fine views of Rathlin Island and surrounding areas. A variety of picnic sites, a short walk and toilets on site.

Walks open all year. 10am-dusk.

Picnic Areas and Toilets.

Admission charge.

T 028 2955 6000

Coleraine Woods

Just under 2kms from Coleraine centre lie three areas of woodland; Mountsandel, Somerset and Castleroe. Situated on either side of River Bann. Mixed woodland planted 19th century and the 1930's - 40's, contains the earliest known site of human habitation in Ireland, Mountsandel Fort.

Walks open all year.

Somerset and Castleroe suitable for wheelchair users.

T 028 2955 6000

Downhill Wood

(On A2, 7 miles west of Coleraine)

There are a number of enjoyable walks and rare trees through 85 hectares of mixed woodland around a beautiful lake, where you can take time to feed the ducks. The biggest Sitka Spruce in Ireland can also be found here. Situated one mile from Castlerock on A2 Coast Road.

Open all year.

Binevenagh Forest

(Off the A2, 5 miles north of Limavady)

Mature mixed woodland. Binevenagh Lough is close to the headland where panoramic views can be seen over Lough Foyle and Donegal Mountains. Rich in interesting arctic and alpine plants.

Open all year.



Glenariff, the Queen of the Glens

Garvagh Forest

(Immediately north west of Garvagh town)

South West of Garvagh town, mature mixed woodland with quiet walks and nature trails along the Agivey River. Car park and picnic area located just off Main Street.

Open all year 10am-dusk.

Ballykelly Forest

(On A2, just west of Ballykelly village)

First taken over by the Forest Service in 1910 this mixed woodland is the first state forest in Northern Ireland.

Walks open all year.

Altarichard

There are two way-marked hill walks at Altarichard on the scenic route between Magherahoney and Cushendall. Walkers can enjoy two challenging circular upland routes taking in the summit at Croaghan from which magnificent panoramic views can be seen. Carpark and picnic area on site.

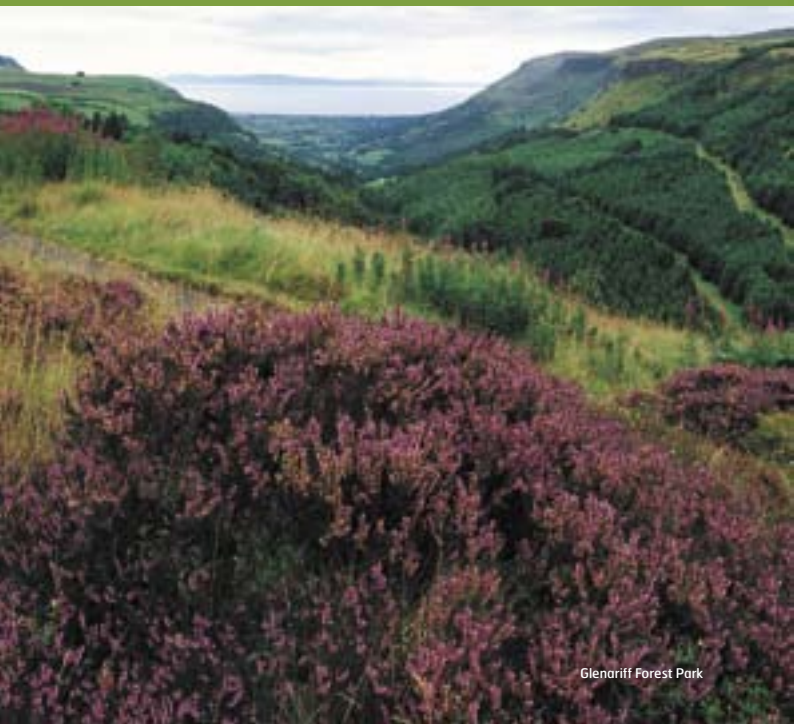
Open all year.



Fairhead

the nine green **glens of antrim**

From Ballycastle to Glenarm the magnificent Glens of Antrim slowly unfold along fifty miles of stunning coast line.



Alternating sandy bays and rocky shores contrast with high cliffs and forbidding headlands.

The Antrim plateau, high and undulating is deeply dissected by steep sided glens and rushing rivers. No wonder then that much of this area has been designated as an area of Outstanding Natural Beauty.

It is a beauty that has been admired since time immemorial. Early man's presence has been marked by the discovery of flint tools and axe heads. From the Neolithic period earthen raths, cashels and crannogs are dotted throughout the region evoking heroic adventures and the epic exploits of great men during early Christian times.

Medieval churches add character to the towns and villages of the Glens whilst the many remains of once impenetrable castles create images of a turbulent past.

Woven into the facts of history is the mystic and colour provided by the region's myths and legends. The Glens and its people are famous for their stories of daring deeds, battles and long lost lovers. Stories abound about the warrior

poet Ossian, the legendary giant Finn McCool, Deirdre of the Sorrows and many more. Think of the heartrending tale of the children of Lir turned into swans by their evil stepmother Aoife and banished to survive for 300 years on the Sea of Moyle. Overlooking Cushendall is the cone shaped hill of Tieveragh but approach it with care for this is the home of the 'little people'. Fairies, young and old, play an integral part in local folklore with tales of changelings and banshees. Visitors should always respect the golden rule - never cut down a hawthorn or 'fairy' thorn as bad luck will almost certainly follow!

Also famed in legend are the magnificent glens themselves. The



Ossians Grave, Glenaan

rich musical sounds of their names and their meanings relate to the character of the glens or events of long ago.

Characterised by tumbling waterfalls, rushing rivers, lush forest parks and spectacular scenery each glen is unique in its beauty and each deserves a visit.

Experience nature in its purest form on the windswept Garron Plateau - a wild blanket bog designated as an Area of Special Scientific Interest. Littered with lakes and consisting of peat the bog supports a unique and beautiful plantlife. Butterwort and sundew abound, the latter with powers to cure warts, corns and even help sunburn if the old wives tales are to be believed.

For cures of a more traditional kind look no further than the high street stores and corner shops found in the many towns and villages throughout the region. Picturesque villages such as Ballygally with its Castle hotel and famous haunted bedroom and Cushendun with its Cornish style cottages complement the distinctive charm of Glenarm with its majestic castle, home to the Earls of Antrim. Carnlough boasts a famous hotel once owned by

Winston Churchill whilst Cushendall and Ballycastle are popular coastal havens for family holidays.

Indeed families will be spoilt for choice for things to do in the Glens of Antrim. From hiking and golf to birdwatching and fishing all are available in the area. Watersports, sailing and the full range of outdoor pursuits are also on offer.

For more cultural pursuits the Glens of Antrim are famous the world over for their 'fleadhs' or festivals. Traditional music and Irish dancers spill onto the streets during the many events held throughout the summer months. The Ould Lammas Fair in Ballycastle is a particular favourite where visitors can sample 'Dulse' - a dried edible seaweed and the deliciously chewy 'Yellow Man', made from a closely guarded secret.

Warmth and hospitality are the hallmark of this unique region. No matter where you go in the beautiful Glens of Antrim you'll find the friendliest of people ready to stop, have a chat and help you towards your next destination!

THE NINE GLENS OF ANTRIM

Glenarm

The glen of the army - with Glenarm village, eleven miles north of Larne, on the famous Antrim Coast road.

Glencloy

The glen of the hedges, two miles north of Glenarm, with the village of Carnlough at its foot.

Glenariff

The arable or fertile glen, the best-known of the nine, which sweeps majestically towards the village of Waterfoot.

Glenballyemon

Edwardstown glen, at the foot of which is Cushendall - more or less at the centre of the nine glens.

Glenaan

The glen of the colt's foot or rush lights, a rugged glen - having the site of the legendary Ossian's grave, with the Cushendall - Ballymoney mountain road.

Glencorp

The glen of the slaughtered, close by Glenaan and roughly parallel to the main road from Cushendall to Cushendun.

Glendun

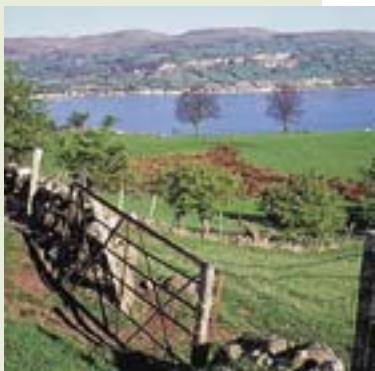
The glen of the brown river, adjacent to Cushendun village; spanned by a viaduct on the main Cushendall - Ballycastle road.

Glenshesk

The sedgy glen, east of the town of Ballycastle, and sweeping towards the ruins of historical Bonamargy friary.

Glentaisie

The glen of 'Tasie of the bright sides', roughly west of Ballycastle and, like Glenshesk, close to the town.



Carnlough Bay at the foot of Glencloy

events **2006**

This is not an extensive list of events and may be subject to change. For a complete listing including local entertainment, please contact the tourist information centres listed on the inside back cover.



February

- Ballymena Festival of Music, Speech and Drama.

March

- Ballymoney 67th Drama Festival.
- St Patrick's Day Musical Celebrations, Coleraine.
- St Patrick's Day Celebrations at Slemish Mountain, Broughshane.
- St Patrick's Day Tea Dance, Larne Alive.
- Coleraine International Choral Festival.
- Ballycastle Horse Ploughing Match and Heavy Horse Show.
- Newtownabbey Full Length Drama Festival.

April

- Ballymoney Irish Dancing Festival.
- Ballymena International Soccer Tournament.
- Seabird Season Begins, Rathlin Island.
- Coleraine Music Festival.
- Mayor's Parade and Fun Day, Coleraine.
- Benbradagh Hill Climb, Limavady (motor).

May

- Ballymoney Bike Fest.
- Ballymena Show and Countryside Festival.
- North West 200 Race Week (Race Day 13 May 2006).
- Portrush Raft Race.
- Maritime Festival, Coleraine.
- Four Swans Festival, Ballycastle.
- 250th Ballyclare May Fair Celebrations
- Celtic European Festival of the Sea, Causeway Coast/ Lough Foyle.

June

- Ballymoney Agricultural Show.
- Ballymoney Mayor's Show.
- Ballymoney Countryside Walks Programme.
- Carrickfergus Historical Pageant Celebrations.
- Black Bush Golf Tournament.
- Larne Alive Summer Festival.
- Larne Steam Train Excursions.
- Limavady Jazz and Blues Festival.
- Roe Valley Vintage Rally.
- Chicks on the Rocks, Rathlin Island.
- Feis na nGleann, Glens of Antrim.
- Walk the Glens Festival, Glens of Antrim.
- Glens of Antrim Spring Walking Festival.
- Cushendun Fun Day.

- Fairhead Folk Festival.
- Summer Band Concerts, Newtownabbey.
- Festival of the Sea, Portrush.
- Zap Cat Grand Prix of Portrush.

July

- Ballymoney Countryside Walks Programme.
- Ballymena Steam Traction Engine Rally.
- Big Splash Fun Day, Portglenone Marina.
- Carrickfergus Fourth of July Celebrations.
- Carrickfergus Outdoor Theatre, Maritime and Family Fun Entertainment.
- Carrickfergus International Ladies' Football Tournament.
- Summer Entertainment Night, Portrush.
- Red Sails Festival, Portstewart.
- Glenarm Castle Open Days.
- Danny Boy International Women's Two Day Cycle Race, Limavady.
- Londonderry and Limavady Agricultural Show.
- Eagles Rock Hill Climb (motor).
- Rathlin Island Festival Week.
- Bye-bye Puffins, Rathlin Island.
- Co Antrim Tennis Championships, Ballycastle.
- Ballycastle Golf Club Open Week.
- Summer Band Concerts, Larne and Newtownabbey.
- Northern Ireland Milk Cup Tournament (Ballymoney, Coleraine and Limavady, 31st July - 4 August).
- North of Ireland Open Amateur Golf Championship, Royal Portrush Golf Club.
- East Antrim Traditional Music Summer School.

August

- Ballymoney Countryside Walks Programme.
- Mid Antrim 150 Road Race, Clough.
- Carrickfergus Outdoor Theatre, Maritime and Family Fun Entertainment.
- North West Pipe Band Championships, Portrush.
- Summer Entertainment Night, Portrush.
- Festival of the Sea, Portrush.
- Mini Cars Weekend, Portrush.
- The Danny Boy Festival, Limavady.
- Dogleap Stages Car Rally, Limavady.
- Heart of the Glens Festival, Cushendall.
- Country Markets, Ballycastle.
- Finn McCool Festival.
- Marconi Festival, Ballycastle.
- Co Antrim Tennis Championships, Ballycastle.

- Bye Bye Puffins, Rathlin Island.
- Ballycastle Fest.
- Ould Lammas Fair, Ballycastle.
- Summer Band Concerts, Newtownabbey and Larne.
- Newtownabbey Shoreline Festival.
- Rural Heritage Festival, Limavady.
- East Antrim Traditional Music Summer School.

September

- European Heritage Open Days (Arthur Cottage and Gracehill), Ballymena.
- NI International Air Show, Portrush.

- Garvagh Clydesdale Show and Vintage Vehicle Rally.
- Let Me Take You to the Island, Rathlin Island.
- Gig on the Bann, Portglenone.
- The Gumball Rally Kite Surfing, Limavady.

October

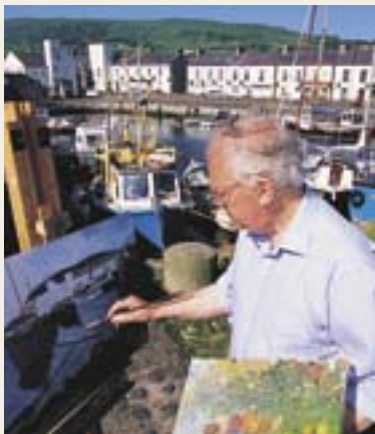
- Ballymena Arts Festival.
- Roe Valley Tractor and Engine Club Ploughing Match.
- Roe Valley Folk Festival.
- Halloween Festivals throughout region.



Shoreline Festival, Newtownabbey



Steam Engine Exhibition, Ballymena



Painter's Paradise

golf

Amateur and professional golfers are spoilt for choice with the variety and quality of bracing links courses and beautiful parkland courses.

The magnificent Dunluce Course at Royal Portrush Golf Club has played host to many prestigious competitions including the British Open. But whether you are playing off scratch or beginning from 'scratch' the Causeway Coast and Glens has miles of fabulous fairways, whatever your handicap.



	No of holes	Length of course (yds)	Club hire	Visitor days
Ballycastle 2 Cushendall Road, Ballycastle T 028 2076 2536	18	5,744	Yes	Weekdays
Ballymena 128 Raceview Road Broughshane, Ballymena T 028 2586 1487 www.ballymenagolfclub.co.uk	18	5,299	No	Daily
Benone 53 Benone Avenue, Limavady T 028 7775 0555 www.limavady.gov.uk	9	1,427	Yes	Daily
Bentra Slaughterford Road Whitehead T 028 9337 8996 www.carrickfergus.org	9	3,042	Yes	Daily
Brown Trout 209 Agivey Road, Aghadowey T 028 7086 8209 www.browntroutinn.com	9	5,510	Yes	Daily
Cairndhu 192 Coast Road Ballygally, Larne T 028 2858 3954	18	6,136	Yes	Daily except Sat

	No of holes	Length of course (yds)	Club hire	Visitor days
Carnfunnock Drain's Bay, Larne T 028 2827 0541 www.larne.gov.uk	9	1,145	Yes	Daily
Castlerock (2 courses) 65 Circular Road, Castlerock T 028 7084 8314 www.castlerockgc.co.uk				
Mussenden Course (Booking necessary)	18	6,747	Yes	Mon-Fri
Bann Course	9	2,493	Yes	Daily
Cushendall 21 Shore Road, Cushendall T 028 2177 1318	9	4,794	Yes	Daily ex Thurs Ladies Day
Galgorm Castle Galgorm Road, Ballymena T 028 2564 6161 www.galgormcastle.com	18	6,736	Yes	Daily
Gracehill 141 Ballinlea Road Stranocum, Ballymoney T 028 2075 1209 www.gracehillgolfclub.co.uk	18	6,550	No	Daily (Booking necessary at weekends / public holidays)

	No of holes	Length of course (yds)	Club hire	Visitor days
Greenacres Golf Centre 153 Ballyrobert Road Ballyclare T 028 9335 4111 www.greenacresgolfcentre.co.uk	18	6,031	Yes	Daily Except 3pm
Portstewart (3 courses) 117 Strand Road, Portstewart T 028 7083 2015 www.portstewartgc.co.uk				
Strand Course (Booking necessary)	18	6,779	Yes	Mon, Tues, Thurs, Fri
Town Course	18	4,730	Yes	Daily
Riverside Course	18	5,225	Yes	Daily
Radisson Roe Park Roe Park Hotel, Limavady T 028 7776 0105 www.radissonroepark.com	18	6,324	Yes	Daily
Royal Portrush (2 courses) Bushmills Road, Portrush T 028 7082 2311 www.royalportrushgolfclub.com				
Dunluce Links	18	6,845	Yes	Mon-Fri am, and 2pm+
Valley Links	18	6,304	Yes	Daily except Sat & Sun am

This is only a selection of the courses located throughout the Causeway Coast and Glens. For more information or details of a course near you, phone one of the Tourist Information Centres listed on page 111.

accommodation

Alphabetical listing of accommodation
by town and name of establishment.

Camping Barns page 107

Hostels page 107

Caravan Parks page 108

Marinas page 109



KEY

- H** Hotel
- GH** Guest House
- GI** Guest Inn
- LGI** Licensed Guest Inn
- BB** Bed and Breakfast
- SC** Self Catering
- YH** Hostel
- CP** Caravan Park
- CB** Camping Barns
- M** Marina

All establishments are registered and approved by the Northern Ireland Tourist Board. Tariff rates quoted include VAT and service charge, but are subject to alteration and must be confirmed at time of booking. Self-catering rates are per week. B&B rates are per person per night sharing (supplements for single/ensuite may apply).

ANTRIM

- H** **The Dunadry Hotel and Country Club ******
2 Islandreagh Drive
Dunadry BT41 2HA
T 028 9443 4343
www.mooneyhotelgroup.com
From £43
- H** **Comfort Hotel Antrim *****
20 Dunsilly Road
Antrim BT41 2JH
T 028 9446 2929
www.comforthotelantrim.com
From £75 per room
- BB** **The Lodge**
120 Belfast Road Antrim BT41 2BA
T 028 9446 7170
M 07884 303 502 or
M 07810 621 160
www.thelodgeonline.co.uk
From £25
- BB** **Wentworth Country House**
30 Rathmore Road
Antrim BT41 2HG
T 028 9443 2100
M 07960 229 899
www.wentworthcountryhouse.com
From £25
- ARMOY**
- SC** **Limepark Arts & Cottages ******
37 Drones Road
Armoys BT53 8XJ
T 028 2075 1216
M 07904 986 566
www.limepark.com
From £200

ARMOY cont.**SC Riverside Apartments ******

4/6 Main Street
 Armoys BT53 8RQ
 T 028 2075 1223
 www.armoy.com
 From £150

SC Charlie's ***

64 Carrowreagh Road
 Armoys BT53 8RS
 T 028 2075 1162
 M 07903 178 080
 www.charliesselfcatering.co.uk
 From £250

BALLINTOY**LGI Fullerton Arms *****

22 Main Street
 Ballintoy BT54 6LX
 T 028 2076 9613
 www.fullertonarms.co.uk
 From £25

BB Ballintoy House

9 Main Street
 Ballintoy BT54 6LX
 T 028 2076 2317
 M 07751 808 120
 From £17

BB Knocksoughey House

122 Whitepark Road
 Ballintoy BT54 6LX
 T 028 2076 2967
 www.knocksoughey.co.uk
 From £20

BB Portcampley House

8 Harbour Road
 Ballintoy BT54 6NA
 T 028 2076 8200
 M 07780 954 654
 www.portcampley.8k.com
 From £19

BB Whitepark House ♦♦♦♦

150 Whitepark Road
 Whitepark Bay
 Ballycastle BT54 6NH
 T 028 2073 1482
 www.whiteparkhouse.com
 From £35

SC Knocksoughey Apartment ****

122a Whitepark Road
 Ballintoy, Ballycastle BT54 6LX
 T 028 2076 2967
 www.knocksoughey.co.uk
 Phone for prices

SC Lemawilkin Cottage ****

5 Knocksoghey Lane
 Ballintoy BT54 6NR
 T 028 2076 2032
 www.northerntrimcottage.
 bravepages.com
 From £250

SC The Wee House ****

134a Whitepark Road
 Ballintoy BT54 6ND
 T 028 2076 2093
 www.theweehouse.com
 From £230

SC Braeside ***

2 Knocksoghey Lane
Ballintoy BT54 6NR
T 028 2076 2921
www.braesidecottage.itgo.com
From £200

BALLYCASTLE**H Marine Hotel *****

1 North Street
Ballycastle BT54 6BN
T 028 2076 2222
www.marinehotel.net
From £37.50

GH Crockatinney ***

80 Whitepark Road
Ballycastle BT54 6LP
T 028 2076 8801
www.crockatinneyguesthouse.co.uk
From £25

GH Glenluce Guest House **

42 Quay Road
Ballycastle BT54 6BH
T 028 2076 2914
www.glenluceguesthouse.com
From £25

BB Ardaghmore

35 North Street
Ballycastle BT54 6BP
T 028 2076 3329
www.ardaghmore.com
From £20

BB Beechwood

9 Beechwood Avenue
Ballycastle BT54 6BL
T 028 2076 3631
From £20

BB Clare House

33 Whitepark Road
Ballycastle BT54 6LL
T 028 2076 3889
www.clarehouseballycastle.com
From £20

BB Colliers Hall

50 Cushendall Road
Ballycastle BT54 6QR
T 028 2076 2531
www.colliershall.com
From £20

BB Corratavey

40 Quay Road
Ballycastle BT54 6BH
T 028 2076 2845
M 07962 077 463
www.corratavey.co.uk
From £25

BB Fragens

34 Quay Road
Ballycastle BT54 6BH
T 028 2076 2168 or
T 028 2076 2181
M 07739 911 569
<http://members.aol.com/jgreene710>
From £20

BALLYCASTLE cont.**BB Islandarragh House**

7 Islandarragh Road
Cape Castle
Ballycastle BT54 6HX
T 028 2076 2933
From £20

BB Hillsea Two

6 Rathlin View
Ballycastle BT54 6EN
T 028 2076 2385
From £25

BB Kinbane Farmhouse

85 Whitepark Road, Kinbane
Ballycastle BT54 6LP
T 028 2076 9947
M 07753 508 669
www.kinbane.com
From £17.50

BB Mountview House

23 Carrowreagh Road
Armoyle BT53 8UH
T 028 2075 1402
From £17

BB Rock Manor

87a Straid Road
Ballycastle BT54 6NW
T 028 2076 8815
M 07870 758 273
From £25

BB Torr Brae

77 Torr Road
Ballycastle BT54 6RQ
T 028 2076 9625
M 07706 140173
www.torrbrae.co.uk
From £17.50

SC Admiran ****

3 Whitepark Drive
Ballycastle BT54 6WG
T 028 2175 8258
M 07915 062 294
From £260

SC Apartment 7 Strand Court ****

7 Strand Court
Ballycastle, BT54 6JZ
T 028 7930 0345
M 07808 096 465
www.antrimcoastandglens.com
From £294

SC Glebe Cottage ***

15 Novally Road
Ballycastle BT54 6HE
T 028 2076 2783
From £240

SC Glenshesk School House ***

7 Greenan Road
Ballycastle BT54 6QA
T 028 2076 2280
From £190

SC Strand Cottage ***

20 Sheskburn Ave
Ballycastle BT54 6BL
T 028 2076 2385
From £250

SC 8 Strand Court ***

Ballycastle BT54 6JZ
T 028 2827 9349
From £250

SC Cushleake House * and Garden Cottage ****

32 Quay Road
Ballycastle BT54 6BH
T 028 7133 8326
M 07703 343 326
www.glenalla.com
From £350 (Cushleake House)
From £150 (Garden Cottage)

SC Silvercliffs Holiday Village **

21 Clare Road
Ballycastle BT54 6DB
T 028 2076 2550
www.hagansleisure.co.uk
From £133

BALLYCLARE**BB Rua-Wai Farm**

149 Templepatrick Road
Ballyclare BT39 9RW
T 028 9335 2417
From £18

BB The Cottage

38 Ballymena Road
Doagh, Ballyclare BT39 0QR
T 028 9334 0483
M 07720 872 005
From £20

BB Woodbine Farm

98 Carrickfergus Road
Ballynure
Carrickfergus BT39 9QP
T 028 9335 2092
From £19

BALLYGALLY**BB Cairnview**

13 Croft Heights, Ballygally
Larne BT40 2QS
T 028 2858 3269
M 07745 570 037
www.cairnviewweb.co.uk
From £20

SC Ballygally Holiday Apartments ***/****/*****

210 Coast Road
Ballygally BT40 2QQ
T 028 2858 3061
M 07890 197 210
www.antrimcoastandglens.co.uk
From £195

BALLYGALLY Cont.**SC Croft Holiday Let *****

14 Croft Park
 Ballygally BT40 2QR
 T 028 2858 3807
 M 07801 815 819
www.croftholidaylet.co.uk
 From £220

BALLYMENA**H Galgorm Manor ******

136 Fenaghy Road
 Ballymena BT42 1EA
 T 028 2588 1001
www.galgorm.com
 From £55

GH Marlagh Lodge ***

71 Moorfields Road
 Ballymena BT42 3BU
 T 028 2563 1505
www.marlaghlodge.com
 From £35

GH The Battery Inn **

2 Church Road, Glenwhirry
 Ballymena BT42 3EQ
 T 028 2583 1246
www.thebatteryinn.com
 From £25

BB Broughanore B&B

148 Culcrum Road
 Cloughmills BT44 9DT
 T 028 2763 7830
 From £25

BB Four Winds

146 Crankill Road, Garryford
 Ballymena BT44 9HA
 T 028 2568 5360
 M 07876 358 820
 From £25

BB Glenfield

141 Church Road, Glenwhirry
 Ballymena BT42 3EJ
 T 028 2583 1283
 M 07790 398 537
 From £18

BB Hill Street Haven

28 Hill Street
 Ballymena BT43 6BH
 T 028 2563 8479
 M 07729 830 755
 From £20

BB Laurel Farm

8 Oldtown Road, Kells
 Ballymena BT42 3NL
 T 028 2589 1727
 M 07808 857 326
www.laurelfarm.net
 From £20

BB Lisbreen Farmhouse

436 Cushendall Road
 Ballymena BT43 6QE
 T 028 2175 8367
 From £18

BB Lisnafillan Lodge

46 Lisnafillan Road
Gracehill BT42 1JA
T 028 2587 1660
M 07850 187 581
www.gracehillaccommodation.co.uk
From €21.50

BB Meadow View

13 Redford Road, Cullybackey
Ballymena BT43 5PR
T 028 2588 0738
M 07870 730 051
From €25

BB Neelsgrove Farm

51 Carnearney Road, Ahoghill
Ballymena BT42 2PL
T 028 2587 1225
www.neelsgrovefarm.com
From €20

BB Pinegrove Lodge

2 Pinegrove Park
Ballymena BT43 6TJ
T 028 2564 3434
M 07889 466 990
www.pinegrovelodge.co.uk
From €25

BB Tully

102 Moorfields Road
Ballymena BT42 3HJ
T 028 2564 6088
M 07708 153 640
www.tullybandb.co.uk
From €22.50

SC Parkhead Lodge *****

20 Andena Grange
Ballymoney Road
Ballymena BT43 5EU
T 028 2564 3434
M 07889 466 990
www.parkheadlodge.co.uk
From €225

SC Ash Lodge ***

18a Ballyconnelly Road
Cullybackey BT42 1JF
T 028 2588 0600
www.ashlodge.info
From €240

Cherry Lodge (pending classification)

235a Cullybackey Road
Ballymena BT43 5JH
T 028 2588 0408
M 07748 986 305
From €325

BALLYMONEY**GH Harmony Hill Country House ****

Balnamore
Ballymoney BT53 7PS
T 028 2766 3459
www.harmonyhill.net
From €36

BB Enagh Lodge

14 Drumskea Road
Ballymoney BT53 7JB
T 028 2766 3169
From €22.50

BALLYMONEY cont.**BB The Arches**

64 Pharis Road
Ballymoney BT53 8JU
T 028 2764 1570
From £22

BB Westwinds

290a Moyarget Road
Ballymoney BT53 8EG
T 028 2074 1471
From £17

SC Garden Cottage ****

2a Lisconnan Road
Ballymoney BT53 8AD
T 028 2074 1728
From £150

SC O'Harabrook Old Dairy ****

Bann Road, Ballymoney BT53 7PN
T 028 2766 6273
www.oharabrook.com
From £195

SC Heagles Lodge **/*****

3a Heagles Road, Ballybogey
Ballymoney BT53 6NZ
T 028 2074 1896
M 07879 204 167
www.heagleslodge.com
From £250

SC Conagher Self Catering Chalet ***

111 Knock Road
Ballymoney BT53 6NH
T 028 2074 1342
From £150

SC The Chalet ***

8 Crosstagherty Road
Ballymoney BT53 8LN
T 028 2766 4070
M 07845 477 818
Phone for prices

BROUGHSHANE**BB Lough Connolly Farmhouse**

103 Carnlough Road
Broughshane BT43 7HQ
T 028 2568 4380
M 07761 014 434
From £20

SC Mill Cottage ***

Houstons Mill
10 Buckna Road
Broughshane BT42 4NJ
T 028 2586 2777
www.antrim.net/broughshane
From £210

BUSHMILLS**H Bushmills Inn Hotel *****

9 Dunluce Road
Bushmills BT57 8QG
T 028 2073 3000
www.bushmillsinn.com
From £44

H Causeway Hotel **

40 Causeway Road
Giant's Causeway BT57 8SU
T 028 2073 1226
www.giants-causeway-hotel.com
From £40

- BB Ahimsa**
243 Whitepark Road
Bushmills BT57 8SP
T 028 2073 1383
From £18
- BB Ballyness B&B**
38 Castlecat Road
Bushmills BT57 8TN
T 028 2073 1438
M 07977 402 687
From £23
- BB Beardville Farm**
8 Ballyhome Road
Bushmills BT52 2LU
T 028 2073 1323
From £20
- BB Brown's Country House**
174 Ballybogey Road
Bushmills BT52 2LP
T 028 2073 2777
www.brownscountryhouse.co.uk
From £22
- BB Carnglass Farmhouse**
170 Ballybogey Road
Bushmills BT53 6PQ
T 028 2074 1762
www.carnglass.com
From £20
- BB Chris-Mull**
4 Castlenagree Road
Bushmills BT57 8SW
T 028 2073 1154
M 07790 576 528
From £18
- BB Craig Cottage**
181 Whitepark Road
The Craig
Bushmills BT57 8SS
T 028 2073 1480
M 07854 663 943
www.craigcottage.co.uk
From £20
- BB Craigalappin Country House**
26 Craigalappin Road
Bushmills BT57 8XY
T 028 2073 2027
From £19
- BB Kilmoyle Farmhouse**
11 Oldtown Road
Bushmills BT53 6PH
T 028 2074 1466
M 07759 577 868
From £20
- BB Montalto House**
5 Craigaboney Road
Bushmills BT57 8XD
T 028 2073 1257
www.montaltohouse.com
From £23
- BB Portcaman House**
11 Priestland Road
Bushmills BT57 8QP
T 028 2073 2057
www.portcamanhouse.com
From £25

BUSHMILLS cont.**BB Revallagh**

184 Ballybogey Road
 Bushmills BT57 8UQ
 T 028 2073 2295
 From £22

BB Seaview

194 Whitepark Road
 Bushmills BT57 8SN
 T 028 2073 1621
 From £18

BB Springfarm

15 Isle Road, Dunseverick
 Bushmills BT57 8TD
 T 028 2073 1780
 M 07808 039 550
 From £20

BB Tramway B&B

4 Tramway Drive
 Bushmills BT57 8YS
 T 028 2073 2335
 M 07880 552 280
 From £22.50

BB Turfahun Lodge

177 Straid Road, Turfahun
 Bushmills BT57 8XW
 T 028 2073 1918
 From £20

BB Valley View Country House

6a Ballyclough Road
 Bushmills BT57 8TU
 T 028 2074 1608
 M 07718 867 677
www.valleyviewbushmills.com
 From £20

SC Blackrock House *****

25 Runkerry Road
 Bushmills BT57 8SZ
 T 028 9087 4244
 M 07812 198 594
 From £400

SC Glebe Lodge Billy *****

3 Cabragh Road
 Bushmills BT57 8YH
 T 028 2073 1208
 From £200

SC Acorn Lodge ****

2 Tramway Drive
 Bushmills BT57 8YS
 T 028 3750 7265
 M 07765 628 326
www.acornlodge.net
 From £220

SC Aird Cottage ****

10 The Aird, Causeway Road
 Bushmills BT57
 T 028 9751 0212
 M 07719 528 699
www.airdcottage.com
 From £380

SC Bluebell Cottage ****

11 Ballyclogh Cottages
Bushmills BT57 8AA
T 028 2587 1431
M 07759 822 472
From £195

**SC Causeway Cottage
Bushmills ******

38 Bush Crescent
Bushmills BT57 8AJ
M 07771 537 987
www.causewaycottages.co.uk
From £250

SC Croft Cottage ****

254 Whitepark Road
Lisnagunogue
Bushmills BT57 8SP
T 028 2073 1766
M 07773 873 358
www.croftcottageireland.com
From £265

SC Dunluce Cottage ****

9 Dunluce Cottages
Preistland Road, Bushmills
T 028 9187 2999
www.dunlucecottages.com
From £250

SC Gunya ****

37 Bush Crescent
Bushmills BT57 8AJ
T 028 2073 2056
M 07711 896 576
www.causewaycoastselfcatering.com
From £225

SC Maggies ****

252 Whitepark Road
Bushmills BT57 8SP
T 028 2073 2056
M 07711 896 576
www.causewaycoastselfcatering.com
From £175

SC Melagh ****

16 Bush Gardens
Bushmills BT57 8AE
T 028 9044 8249
M 07802 336 624
From £275

SC Primrose Cottage ****

46 Bush Crescent
Bushmills BT57 8AE
T 028 9146 7144
M 07905 146 942
www.primrosecottagebushmills.co.uk
From £225

SC Rose & Lavender Cottage ****

8/9 Ballyclough Cottages
Ballyclough Road
Bushmills BT57 8XA
T 028 2073 1592
www.geocities.com/cottageholidays
From £180

SC The Drum Gatelodge ****

The Irish Landmark Trust
Ballylough Estate, Bushmills
T 00353 1 670 4733
www.irishlandmark.com
From £322

BUSHMILLS cont.

- SC Trail House ******
47 Bush Crescent
Bushmills BT57 8AJ
T 07803 229 285
From £225
- SC Willow Cottage ******
14 Ballyclough Cottages
Bushmills BT57 8AA
T 01373 834 353
M 07802 410 603
www.crawford-cottages.co.uk
From £210
- SC Ballinastaid Farm Cottage *****
Whitepark Bay
17 Moycraig Road
Bushmills BT57 8TB
T 028 2073 1560
From £225
- SC Dunluce Cottages *****
20 Dunluce Cottages
Priestland Road
Bushmills BT56 7AT
T 07790 325 922
From £250
- SC Village Lodge *****
129 Main Street
Bushmills BT57 8QB
T 028 2587 8391
M 07773 268 196
[www.bushmills.vlodge.
btinternet.co.uk](http://www.bushmills.vlodge.btinternet.co.uk)
From £200

- SC Walkmills *****
28a/28b Priestland Road
Bushmills BT57 8XB
T 028 2073 1261
From £175

CARNLOUGH

- H Londonderry Arms Hotel *****
20 Harbour Road
Carnlough BT44 0EU
T 028 2888 5255
www.glensofantrim.com
From £45

- GH Bridge Inn ***
2 Bridge Street
Carnlough BT44 0ET
T 028 2888 5669
M 07711 800 771
www.mcauleyscarnlough.com
From £18

- SC Largy Coastal Apartments *******
69/71 Largy Road
Carnlough BT44 0JJ
T 028 2888 5635
M 07732 704 775
www.ireland4you.freeservers.com
From £200

- SC Redbrae Holiday Cottages *******
58a & 58b Largy Road
Carnlough BT44 0JG
T 028 2888 5397
www.redbraecottages.com
From £275

CARRICKFERGUS**H Clarion Hotel *****

75 Belfast Road
Carrickfergus BT38 8PH
T 028 9336 4556
www.clarioncarrick.com
From £37.50

H Dobbins Inn Hotel **

6-8 High Street
Carrickfergus BT38 7AF
T 028 9335 1905
www.dobbinsinnhotel.co.uk
From £28

H Coast Road Hotel *

28 Scotch Quarter
Carrickfergus BT38 7DP
T 028 9335 1021
www.coastroadhotel.co.uk
From £35

BB Beechgrove

412 Upper Road
Carrickfergus BT38 9PW
T 028 9336 3304
www.beechgrovefarm.co.uk
From £18

BB Drumgart

48 Hillhead Road, Ballycarry
Carrickfergus BT38 9HE
T 028 9335 3507
From £20

BB Hillcrest

66 Bellahill Road
Carrickfergus BT38 9DB
T 028 9336 7342
www.hillcrestireland.co.uk
From £20

BB Leafield House

56 Larne Road Ballycarry
Carrickfergus BT38 9JR
T 028 9337 8692
From £25

BB Parklands

320 Upper Road
Carrickfergus BT38 8PN
T 028 9336 2528
www.parklandsfarmhouse.co.uk
From £18

BB Seascape Country House

59a Quay Lane
Whitehead BT38 9SS
T 028 9337 3828
M 07887 844 983
From £22.50

SC Hillcrest Cottage ****

66 Bellahill Road
Carrickfergus, BT38 9DB
T 028 9336 7342
www.hillcrestireland.co.uk
From £280

CASTLEROCK**BB Carneety House**

120 Mussenden Road
Castlerock BT51 4TX
T 028 7084 8640
M 07762 502 642
From £22

BB Cranford House

11 Circular Road
Castlerock BT51 4XA
T 028 7084 8669
From £20

SC Tara Lodge *****

2 Belvedere Avenue
Castlerock BT51 4XD
T 028 9029 0923
M 07900 898 857
www.tara-lodge.co.uk
From £350

SC Pine Hollow *****

19 Belvedere Park
Sea Road
Castlerock BT51 4XY
T 028 7084 8698
M 07899 666 155
www.irelandaccommodation.co.uk
From £350

SC Castle Cottage ****

53 Belvedere Park
Castlerock BT51 4XW
T 028 9147 1318
M 07968 963 932
From £300

SC Mussenden Derry Farm Cottages ****

23 Seapark
Castlerock BT51 4TH
T 028 7130 1214
M 07708 249 556
www.derryfarmcottages.com
From £350

SC Rose Cottage ****

45 Belvedere Park, Sea Road
Castlerock BT51 4XW
T 028 2589 1487
M 07816 774 013
From £270

SC Gracenotes ***

15 Seacourt Mews
Castlerock BT51 4LG
T 028 7084 9328
From £350

COLERAINE**H Brown Trout Golf and Country Inn *****

209 Agivey Road
Aghadowey BT51 4AD
T 028 7086 8209
www.browntroutinn.com
From £35

H Bushtown House Country Hotel ***

283 Drumcroone Road
Coleraine BT51 3QT
T 028 7035 8367
www.bushtownhotel.com
From £42.50

- H Lodge Hotel and Travelstop *****
Lodge Road
Coleraine BT52 1NF
T 028 7034 4848
www.thelodgehotel.com
From £35
- GH Greenhill House *** ◆◆◆◆**
24 Greenhill Road
Aghadowey
Coleraine BT51 4EU
T 028 7086 8241
www.greenhill-house.co.uk
From £27.50
- BB An Cuileann**
25 University Gardens
Coleraine BT52 1JT
T 028 7032 9751
From £17
- BB Breezemount House**
26 Castlerock Road
Coleraine BT51 3HP
T 028 7034 4615
www.breezemount.co.uk
From £25
- BB Bellevue Country House ◆◆◆◆**
43 Greenhill Road
Aghadowey
Coleraine BT51 4EU
T 028 7086 8797
www.bellevuecountryhouse.co.uk
From £22.50
- BB Camus House**
27 Curragh Road
Coleraine BT51 3RY
T 028 7034 2982
M 07730 386 104
From £25
- BB Carnadoon**
41a Portstewart Road
Coleraine BT52 1RW
T 028 7035 7492
From £22
- BB Cranagh Hill**
52 Cranagh Road
Coleraine BT51 3NN
T 028 7035 1138
From £23
- BB Glenleary Farm House**
12 Glenleary Road
Coleraine BT51 3QY
T 028 7034 2919
M 07749 064 224
www.glenlearyfarm.co.uk
From £18
- BB Heathfield Farm ◆◆◆◆**
31 Drumcroone Road
Killykegan
Coleraine BT51 4EB
T 028 2955 8245
M 07745 209 296
www.heathfieldfarm.com
From £25

COLERAINE cont.**BB Killeague Farm Lodge**

157 Drumcroone Road
Coleraine BT51 3SG
T 028 7086 8229
M 07909 972 656
From £23

BB Lisnagalt Lodge

108 Ballyrashane Road
Coleraine BT52 2LJ
T 028 7032 8005
M 07969 053 955 or
M 07812 062 576
From £20

BB Neely's B&B

52a Gateside Road
Coleraine BT52 2PB
T 028 7035 7185
From £20

BB Quilly Farmhouse

23 Green Road
Coleraine BT51 4LX
T 028 7035 7663
From £20

BB Town House

45 Millburn Road
Coleraine BT52 1QT
T 028 7034 4869
From £16

BB The Grange B&B

2e Grange Road
Coleraine BT52 1NG
T 028 7034 4961
www.thegrangebndb.com
From £25

SC Brown Trout Cottage Suites ****

213-215 Agivey Road
Coleraine BT51 4AD
T 028 7086 8209
www.browntroutinn.com
From £500

SC Ardagh Cottage ****

31 Drumcroone Road
Coleraine BT51 4TB
T 028 2955 8245
M 07745 209 296
www.heathfieldfarm.com
From £300

SC Causeway Holiday Homes - The Mallow ****

36 Cloonavon Green
Portstewart Road
Coleraine BT52 1RG
T 028 9447 9806
M 07802 625 511
www.causewayholidayhomes.com
From £250

SC Kings Country Cottages ***

66 Ringrash Road
Coleraine BT51 4LJ
T 028 7035 1367
www.kingscottages-
coleraine.co.uk
From £220

SC Lisnagault Cottages ***

12 Ballyversal Road
Coleraine BT52 2ND
T 028 7034 3862
M 07761 079 019
www.ireland-travel.co.uk
From £250

SC Mill Cottage Furrow Farm ***

74a Ringrash Road, Ballyvennox
Coleraine BT51 4LJ
T 028 8555 7241
M 07812 788 279
From £275

SC Breezemount House **

26 Castlerock Road
Coleraine BT51 3HP
T 028 7034 4615
www.breezemount.co.uk
From £250

COOKSTOWN**BB Avondale**

31 Killycolp Road
Cookstown BT80 8UL
T 028 8676 4013
www.avondalebb.co.uk
From £25

BB Fortview

36 Tullyboy Road
Moneymore
Cookstown BT45 7YE
T 028 8676 2640
www.smoothhound.co.uk/
hotels/fortview
From £20

CUSHENDALL**BB Ashlea**

2 Tromra Road
Cushendall BT44 OSS
T 028 2177 1651
From £18

BB Cullentra House

16 Cloughs Road
Cushendall BT44 OSP
T 028 2177 1762
From £19

BB Garron View

14 Cloughs Road
Cushendall BT44 OSP
T 028 2177 1018
M 07746 296 391
From £17

BB Glendale

46 Coast Road
Cushendall BT44 ORX
T 028 2177 1495
M 07821 052 597
From £18

CUSHENDALL cont.**BB Sleepy Hollow**

107 Knocknacarry Road
Cushendall BT44 ONT
T 028 2176 1513
M 07759 951 191
From £20

BB The Burn

63 Ballyeamon Road
Cushendall BT44 OSN
T 028 2177 1733
M 07763 974 277
www.theburn-guesthouse.com
From £19

BB The Meadows

81 Coast Road
Cushendall BT44 9QW
T 028 2177 2020
From £22.50

SC Lurig Holiday Cottages **/*****

72 Ballyeamon Road
Cushendall BT44 OSN
T 028 2177 1718
M 07752 457 489
www.cushendallcottages.com
From £240

SC Lurigidan House ****

38 Coast Road
Cushendall BT44 ORX
T 028 2177 1701
M 07801 981 876
www.lurigidan.com
From £295

SC Sandstones ***

14 Shore Street
Cushendall BT44 ONA
T 028 2177 1218
www.ireland-holidays.net
From £220

SC Antrim Glens Cottages ***

Old School House
Cushendall BT44 ORR
T 028 2177 2990
www.antrim.net/cottages
From £110

SC Tavnaghan Cottage ***

18a Tavnaghan Lane
Cushendall BT44 OSY
T 028 2177 1671
www.geocities.com/tavnaghan_cottage
From £220

SC 22 Ardmoyle Park

Cushendall, Ballymena
T 028 2177 1699
M 00353 868 569 191
www.antrimholidayhomes.com
From £300

CUSHENDUN**GH The Villa Farmhouse ****

185 Torr Road
Cushendun BT44 OPU
T 028 2176 1252
From £25

- BB Cloneymore**
103 Knocknacarry Road
Cushendun BT44 ONT
T 028 2176 1443
M 07740 613 604
www.ireland-holidays.net
From £22
- BB Drumkeerin ♦♦♦♦**
201a Torr Road
Cushendun BT44 OPU
T 028 2176 1554
www.drumkeerinbedandbreakfast.co.uk
From £22.50
- SC Beachview Cottages ******
185c/185d Torr Road
Cushendun BT44 OPU
T 028 9024 1100
From £250
- SC Drumpfiskey ******
153 Glendun Road
Cushendun BT44 OTF
T 028 2176 1239
From £150
- SC Mullarts Apartments ******
114 Tromra Road
Cushendun BT44 OST
T 028 2176 1221
M 07711 405 948
www.mullarts.fsnet.co.uk
From £250
- SC Seaside Cottage and Fisherman's Cottage, Tybann House and Laydeview Cottage ****/*****
41 Glendun Road
Cushendun BT44 OPY
T 028 2176 1289
www.seasidecottages.netfirms.com
From £250
- SC Beech Cottage *****
26 Glendun Road
Cushendun BT44 OPY
T 028 2176 1286
M 07719 940 032
www.cushenduncottage.co.uk
From £200
- SC The Coach House *****
185a Torr Road
Cushendun BT44 OPU
T 028 2176 1252 or
T 028 9024 1100
From £280
- DUNGIVEN**
- SC Magheramore Courtyard *******
59 Magheramore Road
Dungiven BT47 4SW
T 028 7774 1942
www.magheramore.com
From £270

FEENY**BB Drumcovitt House** ◆◆◆◆

704 Feeny Road
 Feeny BT47 4SU
 T 028 7778 1224
www.drumcovitt.co.uk
 From £25

SC Drumcovitt Barn ****

704 Feeny Road
 Feeny BT47 4SU
 T 028 7778 1224
www.drumcovitt.com
 From £295

GIANT'S CAUSEWAY**GI Smugglers Inn** ***

306 Whitepark Road
 Giant's Causeway BT57 8SN
 T 028 2073 1577
www.smugglers-inn.co.uk
 From £25

GH Carnside Guest House **

23 Causeway Road
 Bushmills BT57 8SU
 T 028 2073 1337
 M 07779 647 395
www.carnsideguesthouse.co.uk
 From £20

BB Kal Mar

64a Causeway Road
 Bushmills BT57 8SU
 T 028 2073 1101
 M 07714 596 352
 From £20

SC Ballylinny Holiday Cottages *****

7 Causeway Road
 Bushmills BT57 8SK
 T 07771 886 516
www.giantscauseway.co.uk
 From £270

SC Harebell Cottage Giant's Causeway ****

9 Aird Cottages, Causeway Road
 Bushmills BT57 8AR
 T 028 9076 8532
 M 07801 278 907
www.harebellcottage.com
 From £260

SC Al Norte Holiday Cottages ***

198-200 Causeway Road
 Bushmills BT57 8SY
 T 028 2766 3390
 M 07710 945 321
www.giants-causeway-al-norte.com
 From £200

SC Giant's Causeway Holiday Cottages ***

71 Causeway Road
 Bushmills BT57 8SX
 T 028 2073 1673
www.giantscausewaycottages.com
 From £195

SC Tonduff Cottage ***

130 Causeway Road
 Bushmills BT58 8SX
 T 028 7082 2078
 M 07718 914 700
www.tonduffcottage.com
 From £250

GLENARIFF**BB Dieskirt Farm**

104 Glen Road
Glenariff BT44 ORG
T 028 2177 1308
M 07801 346 792
www.dieskirtfarm.co.uk
From £18

BB Lurig View

38 Glen Road
Glenariff BT44 ORF
T 028 2177 1618
M 07715 722 215
www.lurigview.co.uk
From £21

BB Sanda

29 Kilmore Road
Glenariff BT44 ORQ
T 028 2177 1785
M 07751 492 602
www.ireland-holidays.net
From £20

SC Hazelwood *****

117 Glen Road
Glenariff BT44 ORG
T 028 2177 1440
M 07714 988 221
www.hazelwoodholidayhome.co.uk
From £215

SC Windyridge ****

4 Bayview Park
Glenariff BT44 OSA
T 028 2177 1218
www.ireland-holidays.net
From £250

SC Barahilly House ***

111 Glen Road
Glenariff BT44 ORG
T 028 2177 1440
www.hazelwoodholidayhome.co.uk
From £180

GLENARM**SC Dobbins Cottage *******

86 Feystown Road
Glenarm BT44 OEA
T 028 9447 8636
M 07786 020 346
www.dobbinscottage.com
From £350

SC Briarfield ***

65 Dickeystown Road
Glenarm BT44 OBA
T 028 2884 1296
From £200

GLENGORMLEY**H Corr's Corner ****

315 Ballyclare Road
Newtownabbey BT36 4TQ
T 028 9084 9221
www.corrscorner.com
From £30

ISLANDMAGEE**BB Ashmore House**

135 Browns Bay Road
 Islandmagee BT40 3TQ
 T 028 9338 2276
 From £20

SC Seabreeze *****

Portmuck Road
 Portmuck BT40 3TP
 T 028 9066 0581
 M 07746 508 088
www.seabreezeireland.com
 From £295

SC North Irish Lodge ***/*****

161 Low Road
 Islandmagee BT40 3RF
 T 028 9338 2246
 M 07074 382 246
www.northirishlodge.com
 From £285

SC Fisherman's Leap ***

75/77 Portmuck Road
 Islandmagee BT40 3TP
 T 028 9338 2252
 From £190

KELLS**SC Vale Farm *******

128 Steeple Road
 Edenvale, Kells BT42 3NP
 T 028 2589 8030
 M 07850 375 365
www.edenvalecottages.co.uk
 From £245

LARNE**H Ballygally Castle Hotel *****

Coast Road
 Ballygally, BT40 2QZ
 T 028 2858 1066
www.hastingshotels.com
 From £40

H Highways Hotel ***

Donaghy's Lane, Ballyloran
 Larne BT40 2SU
 T 028 2827 2272
 From £34.50

GH Derrin Guest House **

2 Princes Gardens
 Larne, BT40 1RQ
 T 028 2827 3269
www.derrinhouse.co.uk
 From £22

GH Manor House ** ◆◆◆◆

23 Olderfleet Road
 Larne BT40 1AS
 T 028 2827 3305
www.themanorguesthouse.com
 From £22.50

GH Seaview Guest House **

154-156 Curran Road
 Larne BT40 1BX
 T 028 2827 2438
www.seaviewlarne.co.uk
 From £22

BB Beach Vista

6 Chain Memorial Road
Larne BT40 1AD
T 028 2827 9176
M 07771 925 464
www.beachvista.co.uk
From €22

BB Beltoy Farmhouse

45 Ballywillan Road, Gleno
Larne BT40 3LH
T 028 9337 3725
M 07709 237 014
From £18

BB Droagh Cottage

175 Coast Road, Droagh
Larne BT40 2LF
T 028 2827 2932
From £35

BB Inverbann

7 Glenarm Road
Larne BT40 1BN
T 028 2827 2524
M 07944 437 439
www.inverbann.co.uk
From €23

SC The Hayloft **

45 Browndod Road
Larne BT40 3DY
T 028 2827 4686
www.hay-loft.co.uk
From £175

LIMAVADY**H Radisson SAS Roe Park Resort ******

Roe Park Limavady BT49 9LB
T 028 7772 2222
www.radissonroepark.com
From £47

GH Poplars Guest House **

352 Seacoast Road
Limavady BT49 0LA
T 028 7775 0360
From €22

BB Ballyhenry House

172 Seacoast Road
Limavady BT49 9EF
T 028 7772 2657
M 07706 505 383
From £20

BB Keady View Farm

47 Seacoast Road
Limavady BT49 9DW
T 028 7776 4518
From €22

BB Whitehill Farm House

70 Ballyquin Road
Limavady BT49 9EY
T 028 7772 2306
From €20

LIMAVADY cont.**SC The Old Railway Station ******

459 Seacoast Road
Magilligan BT49 0LL
T 028 7032 2900 or
T 028 7032 1224
www.stationholidays.com
From £430

SC Pebble Cottage ****

51 Tircreven Road
Limavady BT49 0JQ
T 028 7775 0594
M 07761 764 732
Telephone for prices

SC Drumnahay Lodge ***

314 Seacoast Road
Limavady BT49 0JY
T 028 7082 9944 or
T 028 7775 0261
From £250

SC The Loft ***

172 Seacoast Road
Limavady BT49 9EF
T 028 7772 2657
M 07706 505 383
From £150

SC Townley's House ***

1 Tirmacoy, Ballykelly BT49 9JB
T 028 7776 5865 or
T 028 7776 2410
From £250

MONEYMORE**BB Waterside House**

10 Drumrott Road
Moneymore BT45 7QQ
T 028 8676 2451
From £22.50

NEWTOWNABBEY**SC Fernagh Lodge ******

63a Fernagh Drive
Newtownabbey BT37 0BH
T 028 2588 0408
M 07748 986 305
From £260

SC Woodbank Self Catering **/****

451 Shore Road
Newtownabbey BT37 9SE
T 028 9086 3567
From £375

PORTBALLINTRAIE**H Bayview Hotel *****

2 Bayhead Road
Portballintrae BT57 8RZ
T 028 2073 4100
www.bayviewhotelni.com
From £50

BB Bushfoot

1a Bushfoot Drive
Portballintrae BT57 8YW
T 028 2073 2501
From £18

BB Manor House

51 Beach Road
Portballintrae BT57 8RT
T 028 2073 2002
www.portballintrae.com
From £22.50

SC Portree *****

52 Ballaghmore Road,
Portballintrae
T 028 7084 8698
M 07899 666 155
www.irelandaccommodation.co.uk
From £375

SC Portpleasant *****

17 Ballaghmore Ave
Portballintrae
T 028 7084 8698
M 07899 666 155
www.irelandaccommodation.co.uk
From £375

SC Corner Cottage *****

2 Ballaghmore Ave
Portballintrae
T 028 7084 8698
M 07899 666 155
www.irelandaccommodation.co.uk
From £550

**SC Portballintrae
Townhouses *******

74/76 Bayhead Road
Portballintrae BT57 8SA
T 028 9269 9849
From £300

SC Causeway Coast Cottages ****

91 H Maxwell Cottages
Ballaghmore Road
Portballintrae BT57 8RL
T 028 9268 2581
M 07773 627 387
www.causewaycoastcottages.com
From £225

SC Causeway Cottage PBT ****

12 Ballaghmore Cottages
Ballaghmore Road, Portballintrae
T 07771 537 987
www.causewaycottages.co.uk
From £250

SC Fuschia Cottage ****

38 Benbane Park
Portballintrae BT57 8BP
T 01373 834 353
M 07802 410 603
www.crawford-cottages.co.uk
From £240

SC Glenville Cottages ****

Bayhead Road
Portballintrae BT57 8SB
T 028 2073 2233 or
T 028 2073 1279
From £250

SC Maccool Cottages ****

29 and 54 Benbane Park
Portballintrae BT57 8BP
T 028 9268 2380
M 07801 131 626
www.maccoolcottages.com
From £320

PORTBALLINRAE cont.**SC Seacrest ******

Portballinrae
T 028 9185 2880
www.coastalandcountry.com
From £230

SC Strandview ****

7 Bushfoot Drive
Portballinrae BT57 8YW
T 028 9268 3796
M 07811 293 937
From £200

SC Tara Cottage ****

6 Ballinrae Park
Portballinrae BT57 8YN
T 01732 810 520
From £195

SC Causeway Coast Cottages ***

53 Ballinrae Park
Portballinrae BT57 8YN
T 028 9268 2581
M 07773 627 387
www.causewaycoastcottages.com
From £200

SC Cranfield ***

86 Ballaghmore Road
Portballinrae BT57 4RL
T 028 2766 3147
M 07764 853 100
From £275

SC Glenorra ***

3 Bushfoot Avenue
Portballinrae BT57 8YY
T 028 2073 1049
From £250

SC No. 20 Lisanduff Park ***

Portballinrae BT57 8RY
T 028 4461 3415
M 07771 886 482
From £260

SC The Cottage ***

15 Ballinrae Park
Portballinrae BT57 8NY
T 028 9187 1545
M 07729 761 857
www.thecottage-portballinrae.co.uk
From £250

SC 3 Bayhead Apartment

Portballinrae
T 01507 343512
M 07764 201 775
From £300

PORTGLENONE**BB Sprucebank**

41 Ballymacombs Road
Portglenone BT44 8NR
T 028 2582 2150
From £19

BB Whitehill

96 Gortgole Road
Portglenone BT44 8AN
T 028 2582 2124
M 07743 264 856
From £20

PORTRUSH**H The Comfort Hotel
Portrush *****

73 Main Street
Portrush BT56 8BN
T 028 7082 6100
www.comforthotelportrush.com
From £40

H Royal Court Hotel ***

233 Ballybogey Road
Portrush BT56 8NF
T 028 7082 2236
www.royalcourthotel.co.uk
From £35

H Peninsula Hotel **

15-19 Eglinton Street
Portrush BT56 8DX
T 028 7082 2293
www.peninsulahotel.co.uk
From £40

GH Albany Lodge * ◆◆◆◆**

2 Eglinton Street
Portrush BT56 8DX
T 028 7082 3492
www.albanylodgeni.co.uk
From £40

GH Glenkeen Guest House ***

59 Coleraine Road
Portrush BT56 8HR
T 028 7082 2279
www.glenkeenguesthouse.co.uk
From £22

GH Aaranmore Lodge **

14 Coleraine Road
Portrush BT56 8EA
T 028 7082 4640
www.accommodation-
northernireland.com
From £25

GH Adelphi **

67-71 Main Street
Portrush BT56 8BN
T 028 7082 5544
www.adelphiportrush.com
From £23

GH Beulah Guesthouse ** ◆◆◆◆

16 Causeway Street
Portrush BT56 8AB
T 028 7082 2413
www.beulahguesthouse.com
From £25

GH Brookvale **

61 Coleraine Road
Portrush BT56 8HR
T 028 7082 3678
M 07801 486 985
www.brookvaleguesthouse.co.uk
From £21

GH Clarmont Guest House **

10 Lansdowne Crescent
Portrush BT56 8AY
T 028 7082 2397
www.clarmont.com
From £30

PORTRUSH cont.**GH Castle Erin**

Castle Erin Road
 Portrush BT56 8DH
 T 028 7082 2744
www.findmeaccommodation.co.uk/castleerin/
 From £22

BB A Pier View

53 Kerr Street
 Portrush BT56 8QD
 T 028 7082 3234
 M 07751 287 995
www.pierview.com
 From £22.50

BB Abercorn House

57 Coleraine Road
 Portrush BT56 8HR
 T 028 7082 5014
www.abercornportrush.co.uk
 From £18

BB Anvershiel House

16 Coleraine Road
 Portrush BT56 8EA
 T 028 7082 3861
www.anvershiel.com
 From £22.50

BB Atlantis

10 Ramore Avenue
 Portrush BT56 8BB
 T 028 7082 4583
 From £17

BB Avarest Town House

64 Mark Street
 Portrush BT56 8BU
 T 028 7082 3121
 M 07769 744 942
www.avarest.com
 From £25

BB Belvedere Town House

15 Lansdowne Crescent
 Portrush BT56 8AY
 T 028 7082 2771
 From £20

BB Brookhaven

99 Coleraine Road
 Portrush BT56 8HN
 T 028 7082 4164
www.brookhaven.org.uk
 From £22.50

BB Galgorm House

117 Eglinton Street
 Portrush BT56 8DZ
 T 028 7082 3787
www.galgormhouse.com
 From £17.50

BB Hillrise

24 Dhu Varren
 Portrush BT56 8EN
 T 028 7082 2450
www.hillrise-portrush.com
 From £25

BB Maddybenny Country House

18 Maddybenny Farm
Portrush BT52 2PT
T 028 7082 3394
M 07714 247 560
www.maddybenny.com
From £25

BB Oakdene

6 Lansdowne Crescent
Portrush BT56 8AY
T 028 7082 4629
www.oakdeneguesthouse.co.uk
From £25

BB Padora House

50 Eglinton Street
Portrush BT56 8DY
T 028 7082 3419
M 07787 563 805
From £18

BB Prospect House

20 Lansdowne Crescent
Portrush BT56 8AY
T 028 7082 2299
From £15

BB Ramona

8 Ramore Avenue
Portrush BT56 8BB
T 028 7082 4734
www.ramonalodge.com
From £20

BB Ramore Court

24 Princess Street
Portrush BT56 8AX
T 028 7082 9566
www.malcolm@holidayportrush.co.uk
From £25

SC Strathroy Mews ***/******

1a Ballywillan Road
Portrush BT56 8JL
T 028 2588 0408
M 07748 986 305
From £250

SC Links Penthouse *****

Apt 18 The Links
Bushmills Road
Portrush BT56 8SX
T 028 7035 5842
M 07711 432 405
From £360

SC Ashlea Cottages ****

39/40 Magheraboy Road
Portrush BT56 8NX
T 028 7082 2779
www.ashleacottages.com
From £270

SC Atlantic View ****

45 Causeway Street
Portrush BT56 8AD
T 028 7082 5014
www.abercornportrush.co.uk
From £350

PORTRUSH cont.**SC Maddybenny Mews
Holiday Cottages ******

18 Maddybenny Farm
Portrush BT52 2PT
T 028 7082 3394
M 07714 247 560
www.maddybenny.com
From £300

SC McKelvey Cottage ****

6 Magheraboy Hollow
Portrush BT56 8GQ
T 028 9067 1359 or
T 028 7082 5427
M 07970 091 686
From £250

SC Mount Davys House ****

42 Eglinton Street
Portrush BT56 8DY
T 028 2588 0408
M 07748 986 305
From £325

SC Seaview Mews ****

11 Ballyreagh Mews
Portrush BT56 8QE
T 07712 822 731
From £300

**SC West Strand
Apartments ****/*****

26 Dhu Varren
Portrush BT56 8EN
T 028 2588 0408
M 07748 986 305
From £220

SC Bellemont Cottages ***

8 Islandtasserty Road
Portrush BT52 2PN
T 028 7082 3872
From £290

SC 9 Dhu Varren Park ***

Portrush BT56 8EL
T 028 2589 2145
M 07734 138 352
www.dhuvanren.com
From £275

SC Seaview Cottage ***

16b Ballyreagh Road
Portrush BT56 8LR
T 028 2564 0003
From £275

SC The Cottage ***

184 Ballybogey Road
Bushmills BT57 8UQ
T 028 2073 2295
From £250

SC West Bay Apts ***

4 Dhu Varren Park
Portrush BT56 8EL
T 028 8952 1413
M 07760 204 978
From £280

SC 27 Old Castle Court ***

Portrush BT56 8GR
T 028 3888 2273
M 07742 974 240
www.causewaycoastselfcatering.co.uk
From £275

PORTSTEWART**LGI The Anchorage Inn *****

87-89 The Promenade
Portstewart BT55 7AG
T 028 7083 4401
www.theanchorbar.com
From £37.50

LGI Cromore Halt Licensed Guest Inn ***

158 Station Road
Portstewart, BT55 7PU
T 028 7083 6888
www.cromore.com
From £37.50

GH Oregon Guest House ***

168 Station Road
Portstewart BT55 7PU
T 028 7083 2826
M 07774 708 820
From £25

GH Ashleigh House **

164 Station Road
Portstewart BT55 7PU
T 028 7083 4452
M 07770 760 712
From £25

BB A White Wave

36 Station Road
Portstewart BT55 7DA
T 028 7083 3347
From £16

BB Annamoe

40 Burnside Road
Portstewart BT55 7LB
T 028 7083 6306
From £25

BB Ard Na Tra

9 Seaview Drive North
Portstewart BT55 7JY
T 028 7083 2768
<http://website.lineone.net/~ardnatra/>
From £20

BB Breezemount

26 Portrush Road
Portstewart BT55 7DD
T 028 7083 4724
From £20

BB Carnalbanagh

192 Coleraine Road
Portstewart BT55 7PL
T 028 7083 6294
www.carnalbanaghhouse.com
From £25

BB Chez-nous

1 Victoria Terrace
Portstewart BT55 7BA
T 028 7083 2608
M 07900 867 983
www.chez-nousbb.co.uk
From £18.50

PORTSTEWART cont.**BB Cul-Erg House**

9 Hillside (Atlantic Circle)
 Portstewart BT55 7AZ
 T 028 7083 6610
www.culerg.co.uk
 From £23

BB Northgate

13 Old Coach Road
 Portstewart BT55 7BX
 T 028 7083 2497
 M 07989 739 413
 From £20

BB Strand House

105 Strand Road
 Portstewart BT55 7LZ
 T 028 7083 1000
www.strandguesthouse.com
 From £40

BB Stranden

63 Strand Road
 Portstewart BT55 7LU
 T 028 7083 3159
 M 07711 485 605
 From £25

BB Wanderin' Heights

12 High Road
 Portstewart BT55 7BG
 T 028 7083 3250
www.wanderinheights.com
 From £17.50

SC Oakdale Lodge *****

6 Garrylaban Court, Lissadell Ave
 Portstewart BT55 7FN
 T 028 2564 3434
 M 07889 466 990
www.oakdalelodge.co.uk
 From £350

SC Tara Cottage *****

4 Garrylaban Court
 Portstewart BT55 7FN
 T 028 2564 0278
 M 07719 582 172
www.taracottage.info
 From £250

SC 6 Millstone Court ****

Portstewart BT55 6GT
 T 028 9039 7732
 M 07711 233 236
 From £250

SC 7 Atlantic Bay ****

Portmore Road
 Portstewart BT55 7GF
 T 028 9064 1404
 M 07850 417 288
 From £230

SC 9 Portmore Court ****

Portmore Road
 Portstewart BT55 7BE
 T 028 7083 6340
 From £300

SC 6a Old Mill Grange ****

Portstewart BT55 7GD
T 028 9081 3259
From £250

SC Cappagh House ****

159 Coleraine Road
Portstewart BT55 7HT
T 028 7083 2733
M 07752 315 466
From £350

SC Grange House ****

22 Old Mill Grange
Portstewart BT55 7GD
T 028 2954 1219
M 00353 857 110 307
From £280

SC Rosevale ****

33 Station Road
Portstewart BT55 7HH
T 028 8676 2802
www.rosevale.co.uk
From £300

SC Solas House ****

71 Old Mill Grange
Portstewart BT55
T 028 7965 9216
From £280

SC The Cove ****

4 Old Mill Grange
Portstewart BT55 7GD
T 028 8164 8883
M 07776 283 461
From £300

SC Tranquillity ****

4 Aghermore Close
Portstewart BT55 7QL
T 028 7963 4104
From £325

SC 4 O'Hara Court ***

Strand Road
Portstewart BT55 7LT
T 028 9064 1404
M 07850 417 288
From £320

SC 20 Strandview Avenue ***

Portstewart BT55 7LL
T 028 9048 6699
www.luxuryholidaylets.co.uk
From £230

SC Burnside Mews Holiday Homes ***

20 Burnside Mews
Portstewart BT55 7BH
T 028 9447 9822
M 07710 113 097
From £420

PORTSTEWART cont.**SC 4 Ballyaghan Park *****

Portstewart BT55 7SD
 T 028 8676 4292
 M 07919 986 159
 From £200

RANDALSTOWN**BB Lurgan West Lodge**

15a Old Staffordstown Road
 Randalstown BT41 3LD
 T 028 9447 9691
 M 07968 459 199
www.lurganwestlodge.co.uk
 From £20

RASHARKIN**BB Ard Na Bheá**

54 Gortahár Road
 Rasharkin BT44 8SB
 T 028 2957 1761
 M 07929 540 118
 From £25

RATHLIN ISLAND**GH Manor House ****

National Trust
 Rathlin Island BT54 6RT
 T 028 2076 3964
www.ntni.org.uk
 From £26

BB Coolnagrock B&B

Ballynoe, Rathlin Island BT54 6RT
 T 028 2076 3983
 M 07718 124 662
 From £20

SC Puffin Cottage ***

7 Church Bay
 Rathlin Island BT64 6RT
 T 07050 691 956
www.donard.com
 From £295

TEMPLEPATRICK**BB Hollybush Cottage B&B**

721 Antrim Road
 Templepatrick BT39 0AR
 T 028 9443 2899
 M 07745 826 607
 From £25

WHITEABBEY**SC Glenwhirry Court ****

Glenville Road
 Whiteabbey BT37 0PF
 T 028 9024 5999
 From £350

CAMPING BARNs

CUSHENDALL

CB Ballyeamon Camping Barn

127 Ballyeamon Road
Cushendall BT44 0QP
T 028 2175 8451 or
T 028 2175 8699
www.taletteam.demon.co.uk
£8

HOSTELS

BALLINTOY

YH Sheep Island View
42a Main Street
Ballintoy BT54 6LX
T 028 2076 9391
www.sheepislandview.com
Phone for Prices

BALLYCASTLE

YH Ballycastle Backpackers
4 North Street
Ballycastle BT54
T 028 2076 3612
M 07773 237 890
From £10

BUSHMILLS

YH Mill Rest Youth Hostel (HI)
49 Main Street
Bushmills BT57 8QA
T 028 2073 1222
www.hini.org.uk
From £13

CASTLEROCK

**YH The Downhill Hostel
and Pottery**
12 Mussenden Road
Coleraine BT51 4RP
T 028 7084 9077
www.downhillhostel.com
From £10

HOSTELS

PORTRUSH

- YH Macools (Portrush Independent Hostel)**
 35 Causeway Street
 Portrush BT56 8AB
 T 028 7082 4845
www.portrush-hostel.com
 From £10

PORTSTEWART

- YH Rick's Causeway Coast Hostel**
 4 Victoria Terrace
 Portstewart BT55 7BA
 T 028 7083 3789
 From £8.50

RATHLIN ISLAND

- YH Soerneog View Hostel**
 Ouirg
 Rathlin Island BT54 6RT
 T 028 2076 3954
www.n-irelandholidays.co.uk/rathlin
 From £10

WHITE PARK BAY

- YH Whitepark Bay Youth Hostel**
 157 Whitepark Road
 Ballintoy BT54 6NH
 T 028 2073 1745
www.hini.org.uk
 From £13

CARAVAN PARKS

BUSHMILLS

- CP Ballyness Caravan Park ******
 40 Castlecatt Road
 Bushmills BT57 8TN
 T 028 2073 2393
www.ballynesscaravanpark.com
 Touring/Motor £15

CUSHENDALL

- CP Cushendall Caravan Park *****
 62 Coast Road, Cushendall
 T 028 2177 1699
www.moyle-council.org
 Touring/Motor £16
 Tents £7.70-£11.80

CUSHENDUN

- CP Cushendun Caravan Park *****
 14 Glendun Road, Cushendun
 T 028 2176 1254
www.moyle-council.org
 Touring/Motor £16
 Tents £7.70-£11.80

LARNE

- CP Carnfunnock Caravan Park and Camp Site ******
 Drains Bay, Coast Road
 Larne BT40 2QG
 T 028 2827 0541 or
 T 028 2826 0088
www.larne.gov.uk/carnfunnock.html
 Phone for Prices

CARAVAN PARKS

LIMAVADY

CP Benone Tourist Complex

53 Benone Avenue
Benone BT49 0LQ
T 028 7775 0555
www.limavady.gov.uk
Touring £11-£14.50
Tents £6.60-£8.50

NEWTOWNABBEY

CP Jordanstown Caravan Park *

Jordanstown Loughshore Park
Whiteabbey BT37
T 028 9034 0000
www.newtownabbey.gov.uk
Touring/Motor £9

PORTRUSH

CP Carrick Dhu Caravan Park ***

12 Ballyreagh Road
Portrush BT56 8LS
T 028 7082 3712
Phone for Prices

PORTSTEWART

CP Juniper Hill Caravan Park ***

70 Ballyreagh Road
Portstewart BT55 7PT
T 028 7083 2023
Phone for Prices

MARINAS

BALLYMONEY

**M Drumaheglis Marina and
CP Caravan Park *******

36 Glenstall Road
Ballymoney BT53 7QN
T 028 2766 6466 or
T 028 2766 0227
www.ballymoney.gov.uk
Touring/Motor £15
Tents £11

BALLYCASTLE

M Ballycastle Marina

14 Bayview Road
Ballycastle BT54 6BT
T 028 2076 8525
M 07803 505 084
www.moyle-council.org

CARRICKFERGUS

M Carrickfergus Marina

3 Quayside
Carrickfergus BT38 8BE
T 028 9336 6666
www.carrickfergus.org

GLENARM

M Glenarm Harbour

T 028 2884 1285
M 07703 606 763
www.larne.gov.uk/glenarm



Carnlough Harbour

Regional Tourist Information Centres

Ballycastle

Sheskburn House, 7 Mary Street
Ballycastle BT54 6QH
T 028 2076 2024
F 028 2076 2515
E fcampbell@moyle-council.org
www.moyle-council.org

Ballymena

76 Church Street
Ballymena BT43 6DF
T 028 2563 8494
F 028 2563 8495
E tourist.information@ballymena.gov.uk
www.ballymena.gov.uk

Ballymoney

1 Townhead Street
Ballymoney BT53 6BE
T 028 2766 0230
F 028 2766 0222
E touristinfo@ballymoney.gov.uk
www.ballymoney.gov.uk

Carrickfergus

Museum and Civic Centre
Antrim Street, Carrickfergus BT38 7DG
T 028 9335 8049
F 028 9335 0350
E touristinfo@carrickfergus.org
www.carrickfergus.org

Coleraine

Railway Road
Coleraine BT52 1PE
T 028 7034 4723
F 028 7035 1756
E colerainetic@btconnect.com
www.colerainebc.gov.uk

Larne

Narrow Gauge Road
Larne BT40 1XB
T 028 2826 0088
F 028 2826 0088
E larnetourism@btconnect.com
www.larne.gov.uk

Limavady

7 Connell Street
Limavady BT49 0HA
T 028 7776 0307
F 028 7772 2010
E tourism@limavady.gov.uk
www.limavady.gov.uk

Newtownabbey

Development Services Department
Mossley Mill
Newtownabbey BT36 5QA
T 028 9034 0000
F 028 9034 0062
E info@newtownabbey.gov.uk
www.newtownabbey.gov.uk

IMPORTANT NOTE: The information given in this Guide is given in good faith on the basis of information submitted to The Causeway Coast and Glens Limited and McCadden Design Limited. The Causeway Coast and Glens Limited and McCadden Design Limited cannot guarantee the accuracy of the information in this Guide and accept no responsibility for any error or misrepresentation. All liability for loss, disappointment, negligence or other damage caused by the reliance on the information contained in this Guide, or in the event of the bankruptcy or liquidation of any company, individual or firm mentioned, or in the event of any company, individual or firm ceasing to trade, is hereby excluded.

Photography by: E. Crawford, NITB, C. Hill, National Trust, R. Moore. Design by McCadden Design Limited.
Printed in Northern Ireland. WGB 01.06 50k

